

Product datasheet for **TA337562**

CHMP4B Rabbit Polyclonal Antibody

Product data:

Product Type:	Primary Antibodies
Applications:	WB
Recommended Dilution:	WB
Reactivity:	Mouse, Human
Host:	Rabbit
Isotype:	IgG
Clonality:	Polyclonal
Immunogen:	The immunogen for anti-CHMP4B antibody: synthetic peptide directed towards the middle region of human CHMP4B. Synthetic peptide located within the following region: EEISTAISKPVGFGEEFDEDELMAELEELEQEELDKNLLEISGPETVPLP
Formulation:	Liquid. Purified antibody supplied in 1x PBS buffer with 0.09% (w/v) sodium azide and 2% sucrose. <i>Note that this product is shipped as lyophilized powder to China customers.</i>
Purification:	Affinity Purified
Conjugation:	Unconjugated
Storage:	Store at -20°C as received.
Stability:	Stable for 12 months from date of receipt.
Predicted Protein Size:	25 kDa
Gene Name:	charged multivesicular body protein 4B
Database Link:	NP_789782 Entrez Gene 75608 Mouse Entrez Gene 128866 Human Q9H444



[View online »](#)

Background:

This gene encodes a member of the chromatin-modifying protein/charged multivesicular body protein (CHMP) protein family. The protein is part of the endosomal sorting complex required for transport (ESCRT) complex III (ESCRT-III), which functions in the sorting of endocytosed cell-surface receptors into multivesicular endosomes. The ESCRT machinery also functions in the final abscission stage of cytokinesis and in the budding of enveloped viruses such as HIV-1. The three proteins of the CHMP4 subfamily interact with programmed cell death 6 interacting protein (PDCD6IP, also known as ALIX), which also functions in the ESCRT pathway. The CHMP4 proteins assemble into membrane-attached 5-nm filaments that form circular scaffolds and promote or stabilize outward budding. These polymers are proposed to help generate the luminal vesicles of multivesicular bodies. Mutations in this gene result in autosomal dominant posterior polar cataracts.

Synonyms:

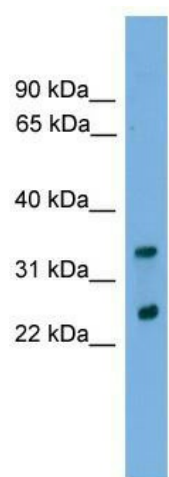
C20orf178; CHMP4A; CTPP3; CTRCT31; dj553F4.4; Shax1; SNF7; SNF7-2; Vps32-2; VPS32B

Note:

Immunogen Sequence Homology: Dog: 100%; Pig: 100%; Rat: 100%; Horse: 100%; Human: 100%; Mouse: 100%; Bovine: 100%; Rabbit: 100%; Zebrafish: 100%; Guinea pig: 100%

Protein Pathways:

Endocytosis

Product images:

WB Suggested Anti-CHMP4B Antibody Titration:
0.2-1 ug/ml; Positive Control: THP-1 cell lysate