

Product datasheet for **TA337560**

IMP5 (SPPL2C) Rabbit Polyclonal Antibody

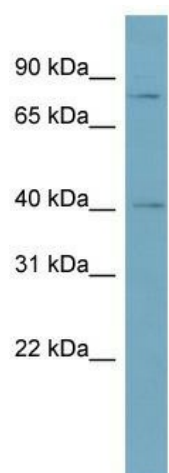
Product data:

Product Type:	Primary Antibodies
Applications:	WB
Recommended Dilution:	WB
Reactivity:	Human
Host:	Rabbit
Isotype:	IgG
Clonality:	Polyclonal
Immunogen:	The immunogen for anti-SPPL2C antibody: synthetic peptide directed towards the middle region of human SPPL2C. Synthetic peptide located within the following region: NPGEDTTEIVTISENEATNPEDRSDSSEGWSDAHLDPNELPFIPPGASEE
Formulation:	Liquid. Purified antibody supplied in 1x PBS buffer with 0.09% (w/v) sodium azide and 2% sucrose.
Purification:	Affinity Purified
Conjugation:	Unconjugated
Storage:	Store at -20°C as received.
Stability:	Stable for 12 months from date of receipt.
Predicted Protein Size:	74 kDa
Gene Name:	signal peptide peptidase like 2C
Database Link:	NP_787078 Entrez Gene 162540 Human Q8IUH8
Background:	SPPL2C may act as intramembrane protease.
Synonyms:	IMP5
Note:	Immunogen Sequence Homology: Human: 100%; Yeast: 75%
Protein Families:	Transmembrane



[View online »](#)

Product images:



WB Suggested Anti-SPPL2C Antibody Titration:
0.2-1 ug/ml; ELISA Titer: 1: 62500; Positive
Control: Human Thymus