

Product datasheet for **TA337559**

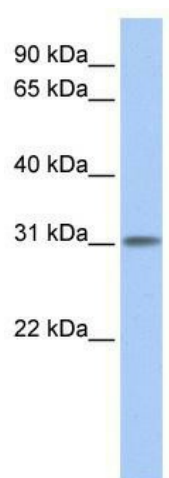
ODF3L1 Rabbit Polyclonal Antibody

Product data:

Product Type:	Primary Antibodies
Applications:	WB
Recommended Dilution:	WB
Reactivity:	Human
Host:	Rabbit
Isotype:	IgG
Clonality:	Polyclonal
Immunogen:	The immunogen for anti-ODF3L1 antibody: synthetic peptide directed towards the N terminal of human ODF3L1. Synthetic peptide located within the following region: KLPKGTSSVYFAQHPEKEPLPSRQEVKQTPVIMAKIKGPGPAKYLRPSC
Formulation:	Liquid. Purified antibody supplied in 1x PBS buffer with 0.09% (w/v) sodium azide and 2% sucrose. <i>Note that this product is shipped as lyophilized powder to China customers.</i>
Purification:	Affinity Purified
Conjugation:	Unconjugated
Storage:	Store at -20°C as received.
Stability:	Stable for 12 months from date of receipt.
Predicted Protein Size:	31 kDa
Gene Name:	outer dense fiber of sperm tails 3 like 1
Database Link:	NP_787077 Entrez Gene 161753 Human Q8IXM7
Background:	The exact function of ODF3L1 remains unknown.
Synonyms:	MGC48986
Note:	Immunogen Sequence Homology: Human: 100%; Pig: 86%; Guinea pig: 86%; Rat: 80%



[View online »](#)

Product images:

WB Suggested Anti-ODF3L1 Antibody Titration:
0.2-1 ug/ml; ELISA Titer: 1: 62500; Positive
Control: Human Placenta