

Product datasheet for **TA337558**

EXOC8 Rabbit Polyclonal Antibody

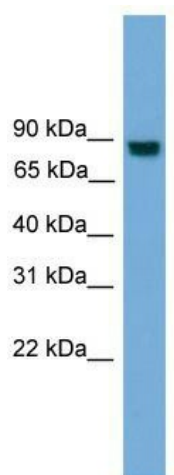
Product data:

Product Type:	Primary Antibodies
Applications:	WB
Recommended Dilution:	WB
Reactivity:	Human
Host:	Rabbit
Isotype:	IgG
Clonality:	Polyclonal
Immunogen:	The immunogen for anti-EXOC8 antibody: synthetic peptide directed towards the N terminal of human EXOC8. Synthetic peptide located within the following region: MAMAMSDSGASRLRRQLESGGFEARLYVKQLSQSDGDRDLQEHRQRIQA
Formulation:	Liquid. Purified antibody supplied in 1x PBS buffer with 0.09% (w/v) sodium azide and 2% sucrose. <i>Note that this product is shipped as lyophilized powder to China customers.</i>
Purification:	Affinity Purified
Conjugation:	Unconjugated
Storage:	Store at -20°C as received.
Stability:	Stable for 12 months from date of receipt.
Predicted Protein Size:	82 kDa
Gene Name:	exocyst complex component 8
Database Link:	NP_787072 Entrez Gene 149371 Human Q8IYI6
Background:	EXOC8 is the component of the exocyst complex involved in the docking of exocystic vesicles with fusion sites on the plasma membrane.
Synonyms:	EXO84; Exo84p; SEC84
Note:	Immunogen Sequence Homology: Dog: 100%; Pig: 100%; Rat: 100%; Horse: 100%; Human: 100%; Mouse: 100%; Bovine: 100%; Rabbit: 100%; Zebrafish: 100%; Guinea pig: 100%



[View online »](#)

Product images:



WB Suggested Anti-EXOC8 Antibody Titration: 0.2-1 ug/ml; Positive Control: Jurkat cell lysate