

Product datasheet for **TA337557**

KLB Rabbit Polyclonal Antibody

Product data:

Product Type:	Primary Antibodies
Applications:	IHC, WB
Recommended Dilution:	WB, IHC
Reactivity:	Human
Host:	Rabbit
Isotype:	IgG
Clonality:	Polyclonal
Immunogen:	The immunogen for anti-KLB antibody: synthetic peptide directed towards the middle region of human KLB. Synthetic peptide located within the following region: DAYTIRRGFLFYVDFNSKQKERPKSSAHYYKQIIRENGFSLKESTPDVQG
Formulation:	Liquid. Purified antibody supplied in 1x PBS buffer with 0.09% (w/v) sodium azide and 2% sucrose. <i>Note that this product is shipped as lyophilized powder to China customers.</i>
Purification:	Affinity Purified
Conjugation:	Unconjugated
Storage:	Store at -20°C as received.
Stability:	Stable for 12 months from date of receipt.
Predicted Protein Size:	120 kDa
Gene Name:	klotho beta
Database Link:	NP_783864 Entrez Gene 152831 Human Q86Z14
Background:	KLB is a single-pass type III membrane protein. It contributes to the transcriptional repression of cholesterol 7-alpha-hydroxylase (CYP7A1), the rate-limiting enzyme in bile acid synthesis. KLB is probably inactive as a glycosidase. It increases the ability of FGFR1 and FGFR4 to bind FGF21.
Synonyms:	BKL

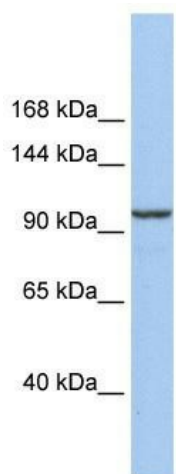


[View online »](#)

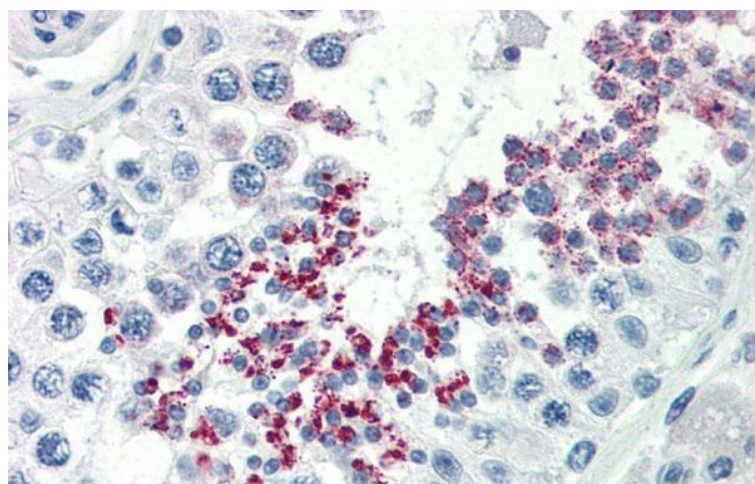
Note: Immunogen Sequence Homology: Rat: 100%; Human: 100%; Mouse: 100%; Bovine: 100%; Dog: 93%; Pig: 93%; Horse: 93%; Rabbit: 86%; Guinea pig: 85%

Protein Families: Transmembrane

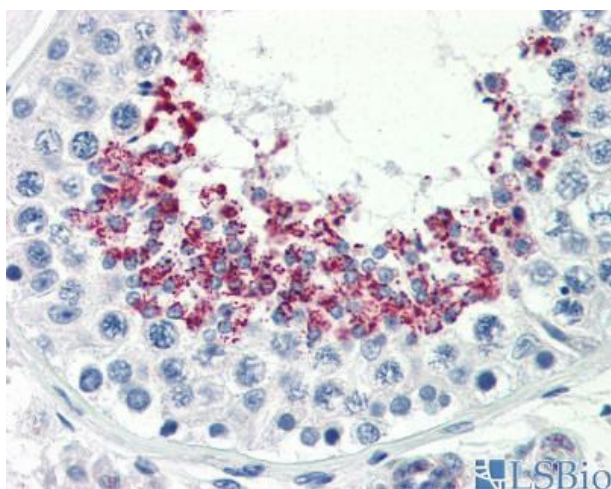
Product images:



WB Suggested Anti-KLB Antibody Titration: 1 ug/ml; Positive Control: 721_B cell lysate



Human Testis



Human Testis