

## Product datasheet for **TA337555**

### **SYT9 Rabbit Polyclonal Antibody**

#### **Product data:**

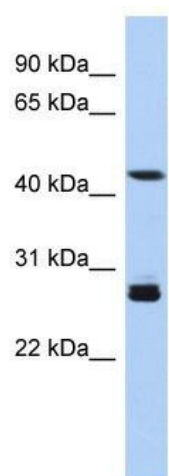
<b>Product Type:</b>	Primary Antibodies
<b>Applications:</b>	IF, WB
<b>Recommended Dilution:</b>	WB, IF
<b>Reactivity:</b>	Human, Mouse
<b>Host:</b>	Rabbit
<b>Isotype:</b>	IgG
<b>Clonality:</b>	Polyclonal
<b>Immunogen:</b>	The immunogen for anti-SYT9 antibody: synthetic peptide directed towards the middle region of human SYT9. Synthetic peptide located within the following region: PDFNIQQLQKQEQLTGIGRIKPELYKQRSLDNDGRRSNSKACGKLNFIL
<b>Formulation:</b>	Liquid. Purified antibody supplied in 1x PBS buffer with 0.09% (w/v) sodium azide and 2% sucrose. <i>Note that this product is shipped as lyophilized powder to China customers.</i>
<b>Purification:</b>	Affinity Purified
<b>Conjugation:</b>	Unconjugated
<b>Storage:</b>	Store at -20°C as received.
<b>Stability:</b>	Stable for 12 months from date of receipt.
<b>Predicted Protein Size:</b>	56 kDa
<b>Gene Name:</b>	synaptotagmin 9
<b>Database Link:</b>	<a href="#">NP_783860</a> <a href="#">Entrez Gene 60510 Mouse</a> <a href="#">Entrez Gene 143425 Human</a> <a href="#">Q86SS6</a>
<b>Background:</b>	SYT9 may be involved in Ca <sup>2+</sup> -dependent exocytosis of secretory vesicles through Ca <sup>2+</sup> and phospholipid binding to the C2 domain or may serve as Ca <sup>2+</sup> sensors in the process of vesicular trafficking and exocytosis.
<b>Synonyms:</b>	FLJ45896
<b>Note:</b>	Immunogen Sequence Homology: Rat: 100%; Horse: 100%; Human: 100%; Mouse: 100%; Bovine: 100%; Rabbit: 100%; Pig: 93%; Guinea pig: 86%; Dog: 79%



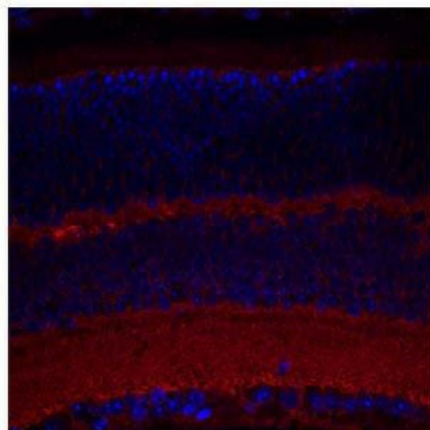
[View online »](#)

Protein Families: Secreted Protein, Transmembrane

### Product images:



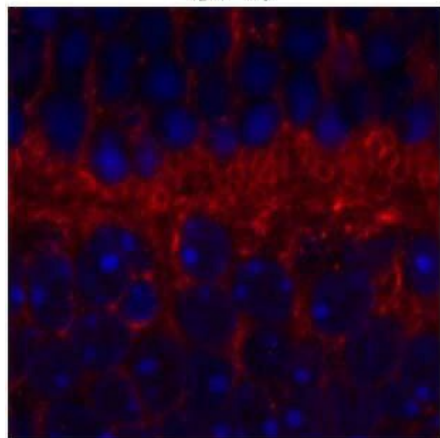
**SYT9**



WB Suggested Anti-SYT9 Antibody Titration: 0.2-1 ug/ml; ELISA Titer: 1: 62500; Positive Control: Human Muscle

Sample Type: complete mouse retina sections;  
Red: Primary; Blue: DAPI; Primary Dilution: 1: 200;  
Secondary Antibody: Goat anti-Rabbit AF568 IgG (H+L); Secondary Dilution: 1: 200; Image Submitted by: David Zenisek; Yale University

## SYT9



Sample Type: outer mouse plexiform layer; Red: Primary; Blue: DAPI; Primary Dilution: 1: 200; Secondary Antibody: Goat anti-Rabbit AF568 IgG (H+L); Secondary Dilution: 1: 200; Image Submitted by: David Zenisek; Yale University