

## Product datasheet for **TA337554**

### **RAB3IP Rabbit Polyclonal Antibody**

#### **Product data:**

<b>Product Type:</b>	Primary Antibodies
<b>Applications:</b>	IF, WB
<b>Recommended Dilution:</b>	WB, IF
<b>Reactivity:</b>	Human, Mouse
<b>Host:</b>	Rabbit
<b>Isotype:</b>	IgG
<b>Clonality:</b>	Polyclonal
<b>Immunogen:</b>	The immunogen for anti-RAB3IP antibody: synthetic peptide directed towards the N terminal of human RAB3IP. Synthetic peptide located within the following region: APCSTSGVTAGLTKLTTRKDNYNAREFLQGATITEACDGSDDIFGLSTD
<b>Formulation:</b>	Liquid. Purified antibody supplied in 1x PBS buffer with 0.09% (w/v) sodium azide and 2% sucrose. <i>Note that this product is shipped as lyophilized powder to China customers.</i>
<b>Purification:</b>	Affinity Purified
<b>Conjugation:</b>	Unconjugated
<b>Storage:</b>	Store at -20°C as received.
<b>Stability:</b>	Stable for 12 months from date of receipt.
<b>Predicted Protein Size:</b>	53 kDa
<b>Gene Name:</b>	RAB3A interacting protein
<b>Database Link:</b>	<a href="#">NP_783322</a> <a href="#">Entrez Gene 216363 Mouse</a> <a href="#">Entrez Gene 117177 Human</a> <a href="#">Q96QF0</a>
<b>Background:</b>	The specific function of this protein remains unknown.
<b>Synonyms:</b>	RABIN3; RABIN8
<b>Note:</b>	Immunogen Sequence Homology: Human: 100%; Dog: 93%; Rabbit: 93%; Pig: 86%; Rat: 86%; Bovine: 86%; Guinea pig: 86%; Horse: 85%; Mouse: 85%



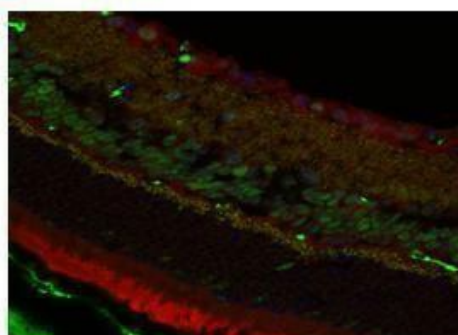
[View online »](#)

## Product images:



WB Suggested Anti-RAB3IP Antibody Titration:  
0.2-1 ug/ml; ELISA Titer: 1: 312500; Positive  
Control: NCI-H226 cell lysate

RAB3IP



Red: RAB3IP antibody  
Green: CtBP antibody  
Blue: DAPI

Application: Immunofluorescence;  
Species+tissue/cell type: Mouse retina tissue;  
Primary antibody dilution: 1: 200; Secondary  
antibody: Goat anti-rabbit Alexafluor 568;  
Secondary antibody dilution: 1: 200 - See more at:  
<http://www.avivasysbio.com/rab3ip-a>