

Product datasheet for **TA337552**

PLEKHA7 Rabbit Polyclonal Antibody

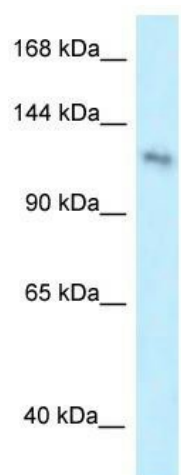
Product data:

Product Type:	Primary Antibodies
Applications:	WB
Recommended Dilution:	WB
Reactivity:	Human
Host:	Rabbit
Isotype:	IgG
Clonality:	Polyclonal
Immunogen:	The immunogen for anti-PLEKHA7 antibody: synthetic peptide directed towards the middle region of human PLEKHA7. Synthetic peptide located within the following region: PESRYQTLPGRGLSGSTSRLQQSSTIAPYVTLRRGLNAESSKATFPRPKS
Formulation:	Liquid. Purified antibody supplied in 1x PBS buffer with 0.09% (w/v) sodium azide and 2% sucrose.
Purification:	Affinity Purified
Conjugation:	Unconjugated
Storage:	Store at -20°C as received.
Stability:	Stable for 12 months from date of receipt.
Predicted Protein Size:	127 kDa
Gene Name:	pleckstrin homology domain containing A7
Database Link:	NP_778228 Entrez Gene 144100 Human Q6IQ23
Background:	PLEKHA7 is required for zonula adherens biogenesis and maintenance. PLEKHA7 acts via its interaction with KIAA1543/Nezha, which anchors microtubules at their minus-ends to zonula adherens, leading to recruit KIFC3 kinesin to junctional site.
Synonyms:	DKFZp686M22243
Note:	Immunogen Sequence Homology: Dog: 100%; Pig: 100%; Horse: 100%; Human: 100%; Mouse: 100%; Rabbit: 100%; Guinea pig: 100%; Rat: 93%; Bovine: 93%



[View online »](#)

Product images:



WB Suggested Anti-PLEKHA7 Antibody Titration:
0.2-1 ug/ml; Positive Control: HeLa cell lysate