

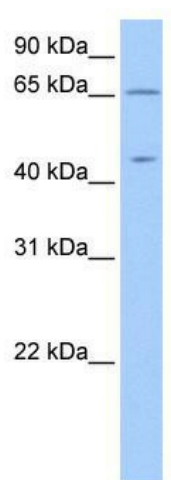
## Product datasheet for **TA337551**

### ZPLD1 Rabbit Polyclonal Antibody

#### Product data:

Product Type:	Primary Antibodies
Applications:	WB
Recommended Dilution:	WB
Reactivity:	Human
Host:	Rabbit
Isotype:	IgG
Clonality:	Polyclonal
Immunogen:	The immunogen for anti-ZPLD1 antibody: synthetic peptide directed towards the C terminal of human ZPLD1. Synthetic peptide located within the following region: DAGRRTTWSPQSSSGSAVLSAGPIITRSDPTNNSQLGSPSPMPFQLNA
Formulation:	Liquid. Purified antibody supplied in 1x PBS buffer with 0.09% (w/v) sodium azide and 2% sucrose.
Purification:	Affinity Purified
Conjugation:	Unconjugated
Storage:	Store at -20°C as received.
Stability:	Stable for 12 months from date of receipt.
Predicted Protein Size:	47 kDa
Gene Name:	zona pellucida-like domain containing 1
Database Link:	<a href="#">NP_778226</a> <a href="#">Entrez Gene 131368 Human</a> <a href="#">Q8TCW7</a>
Background:	The exact function of ZPLD1 remains unknown.
Synonyms:	ZPLD1
Note:	Immunogen Sequence Homology: Dog: 100%; Pig: 100%; Horse: 100%; Human: 100%; Mouse: 100%; Bovine: 100%; Rabbit: 100%; Guinea pig: 100%; Rat: 93%; Zebrafish: 86%
Protein Families:	Transmembrane


[View online »](#)

**Product images:**


WB Suggested Anti-ZPLD1 Antibody Titration: 0.2-1 ug/ml; Positive Control: 721\_B cell lysate