

Product datasheet for **TA337528**

OR5H15 Rabbit Polyclonal Antibody

Product data:

Product Type:	Primary Antibodies
Applications:	WB
Recommended Dilution:	WB
Reactivity:	Human
Host:	Rabbit
Isotype:	IgG
Clonality:	Polyclonal
Immunogen:	The immunogen for Anti-OR5H15 antibody is: synthetic peptide directed towards the C-terminal region of Human OR5H15. Synthetic peptide located within the following region: FLMVFIFSGSIQVFSIVTILISYTFVLFTVLEKKSDKGVRKAFSTCGAHL
Formulation:	Liquid. Purified antibody supplied in 1x PBS buffer with 0.09% (w/v) sodium azide and 2% sucrose.
Purification:	Affinity Purified
Conjugation:	Unconjugated
Storage:	Store at -20°C as received.
Stability:	Stable for 12 months from date of receipt.
Predicted Protein Size:	35 kDa
Gene Name:	olfactory receptor family 5 subfamily H member 15
Database Link:	NP_001005515 Entrez Gene 403274 Human A6NDH6



[View online »](#)

Background:

Olfactory receptors interact with odorant molecules in the nose, to initiate a neuronal response that triggers the perception of a smell. The olfactory receptor proteins are members of a large family of G-protein-coupled receptors (GPCR) arising from single coding-exon genes. Olfactory receptors share a 7-transmembrane domain structure with many neurotransmitter and hormone receptors and are responsible for the recognition and G protein-mediated transduction of odorant signals. The olfactory receptor gene family is the largest in the genome. The nomenclature assigned to the olfactory receptor genes and proteins for this organism is independent of other organisms.

Synonyms:

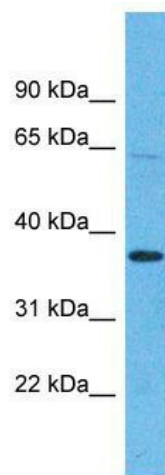
family 5; member 15; olfactory receptor; subfamily H

Note:

Immunogen Sequence Homology: Human: 100%; Rat: 93%; Mouse: 86%; Rabbit: 79%

Protein Families:

Transmembrane

Product images:

Host: Rabbit; Target Name: OR5H15; Sample Tissue: Fetal Kidney lysates; Antibody Dilution: 1.0 ug/ml