

## Product datasheet for **TA337521**

### OR5C1 Rabbit Polyclonal Antibody

#### Product data:

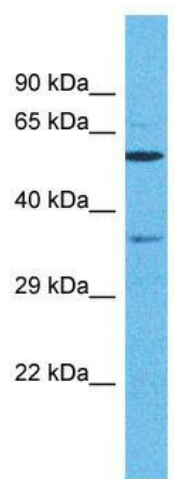
Product Type:	Primary Antibodies
Applications:	WB
Recommended Dilution:	WB
Reactivity:	Human
Host:	Rabbit
Isotype:	IgG
Clonality:	Polyclonal
Immunogen:	The immunogen for Anti-OR5C1 antibody is: synthetic peptide directed towards the C-terminal region of Human OR5C1. Synthetic peptide located within the following region: SSSYALDTDKMASVFYTLVIPSLNPLIYSLRNKEVKEALRQTWSRFHCPG
Formulation:	Liquid. Purified antibody supplied in 1x PBS buffer with 0.09% (w/v) sodium azide and 2% sucrose. <i>Note that this product is shipped as lyophilized powder to China customers.</i>
Purification:	Affinity Purified
Conjugation:	Unconjugated
Storage:	Store at -20°C as received.
Stability:	Stable for 12 months from date of receipt.
Predicted Protein Size:	37 kDa
Gene Name:	olfactory receptor family 5 subfamily C member 1
Database Link:	<a href="#">NP_001001923</a> <a href="#">Entrez Gene 392391 Human</a> <a href="#">Q8NGR4</a>
Background:	The function of this protein remains unknown.
Synonyms:	OR5C2P; OR9-31; OR9-F
Note:	Immunogen Sequence Homology: Pig: 100%; Rat: 100%; Horse: 100%; Human: 100%; Bovine: 100%; Rabbit: 100%; Guinea pig: 100%; Dog: 93%; Mouse: 93%
Protein Families:	Transmembrane



[View online »](#)

Protein Pathways: Olfactory transduction

### Product images:



Host: Rabbit; Target Name: OR5C1; Sample  
Tissue: HeLa Whole cell lysates; Antibody Dilution:  
1.0 ug/ml