

Product datasheet for **TA337496**

OR2T12 Rabbit Polyclonal Antibody

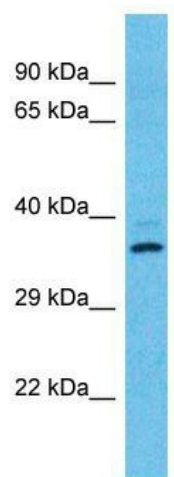
Product data:

Product Type:	Primary Antibodies
Applications:	WB
Recommended Dilution:	WB
Reactivity:	Human
Host:	Rabbit
Isotype:	IgG
Clonality:	Polyclonal
Immunogen:	The immunogen for Anti-OR2T12 antibody is: synthetic peptide directed towards the C-terminal region of Human OR2T12. Synthetic peptide located within the following region: VVSIFYTMFTPLLNPLIYSVRNSEVKEALKRWLGTVCVNLKHQQNEAHRSR
Formulation:	Liquid. Purified antibody supplied in 1x PBS buffer with 0.09% (w/v) sodium azide and 2% sucrose. <i>Note that this product is shipped as lyophilized powder to China customers.</i>
Purification:	Affinity Purified
Conjugation:	Unconjugated
Storage:	Store at -20°C as received.
Stability:	Stable for 12 months from date of receipt.
Predicted Protein Size:	35 kDa
Gene Name:	olfactory receptor family 2 subfamily T member 12
Database Link:	NP_001004692 Entrez Gene 127064 Human Q8NG77



[View online »](#)

Background:	Olfactory receptors interact with odorant molecules in the nose, to initiate a neuronal response that triggers the perception of a smell. The olfactory receptor proteins are members of a large family of G-protein-coupled receptors (GPCR) arising from single coding-exon genes. Olfactory receptors share a 7-transmembrane domain structure with many neurotransmitter and hormone receptors and are responsible for the recognition and G protein-mediated transduction of odorant signals. The olfactory receptor gene family is the largest in the genome. The nomenclature assigned to the olfactory receptor genes and proteins for this organism is independent of other organisms.
Synonyms:	OR1-57
Note:	Immunogen Sequence Homology: Human: 100%
Protein Families:	Transmembrane
Protein Pathways:	Olfactory transduction

Product images:

Host: Rabbit; Target Name: OR2T12; Sample Tissue: HT1080 Whole Cell lysates; Antibody Dilution: 1.0 ug/ml