

Product datasheet for **TA337486**

OR2A1 Rabbit Polyclonal Antibody

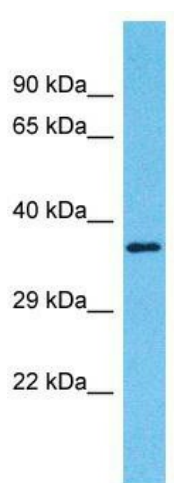
Product data:

| | |
|-------------------------|--|
| Product Type: | Primary Antibodies |
| Applications: | WB |
| Recommended Dilution: | WB |
| Reactivity: | Human |
| Host: | Rabbit |
| Isotype: | IgG |
| Clonality: | Polyclonal |
| Immunogen: | The immunogen for Anti-OR2A42 antibody is: synthetic peptide directed towards the C-terminal region of Human OR2A42. Synthetic peptide located within the following region: FGSAILMYMAPKSRHPPEEQQKVFFLFYSFFNPTLNPLIYSLRNGEVK GAL |
| Formulation: | Liquid. Purified antibody supplied in 1x PBS buffer with 0.09% (w/v) sodium azide and 2% sucrose. <i>Note that this product is shipped as lyophilized powder to China customers.</i> |
| Purification: | Affinity Purified |
| Conjugation: | Unconjugated |
| Storage: | Store at -20°C as received. |
| Stability: | Stable for 12 months from date of receipt. |
| Predicted Protein Size: | 34 kDa |
| Gene Name: | olfactory receptor family 2 subfamily A member 1 |
| Database Link: | NP_001005287 Entrez Gene 346528 Human Q8NGT9 |



[View online »](#)

| | |
|--------------------------|---|
| Background: | Olfactory receptors interact with odorant molecules in the nose, to initiate a neuronal response that triggers the perception of a smell. The olfactory receptor proteins are members of a large family of G-protein-coupled receptors (GPCR) arising from single coding-exon genes. Olfactory receptors share a 7-transmembrane domain structure with many neurotransmitter and hormone receptors and are responsible for the recognition and G protein-mediated transduction of odorant signals. The olfactory receptor gene family is the largest in the genome. The nomenclature assigned to the olfactory receptor genes and proteins for this organism is independent of other organisms. |
| Synonyms: | OR2A42 |
| Note: | Immunogen Sequence Homology: Pig: 100%; Rat: 100%; Human: 100%; Bovine: 100%; Horse: 93%; Dog: 92%; Mouse: 92%; Rabbit: 86%; Guinea pig: 86% |
| Protein Families: | GPCR, Transmembrane |
| Protein Pathways: | Olfactory transduction |

Product images:

Host: Rabbit; Target Name: OR2A42; Sample Tissue: Fetal Kidney lysates; Antibody Dilution: 1.0 ug/ml