

## Product datasheet for **TA337471**

### NSMCE4A Rabbit Polyclonal Antibody

#### Product data:

Product Type:	Primary Antibodies
Applications:	IF, WB
Recommended Dilution:	WB, IF
Reactivity:	Human
Host:	Rabbit
Isotype:	IgG
Clonality:	Polyclonal
Immunogen:	The immunogen for Anti-NSMCE4A antibody is: synthetic peptide directed towards the C-terminal region of Human NSMCE4A. Synthetic peptide located within the following region: PVIQEERAMPAQLRRMEESHQEATEKEVERILGLLQTYFREDPDTMSFF
Formulation:	Liquid. Purified antibody supplied in 1x PBS buffer with 0.09% (w/v) sodium azide and 2% sucrose.
Purification:	Affinity Purified
Conjugation:	Unconjugated
Storage:	Store at -20°C as received.
Stability:	Stable for 12 months from date of receipt.
Predicted Protein Size:	44 kDa
Gene Name:	NSE4 homolog A, SMC5-SMC6 complex component
Database Link:	<a href="#">NP_060085</a> <a href="#">Entrez Gene 54780 Human</a> <a href="#">Q9NXX6</a>



[View online »](#)

**Background:**

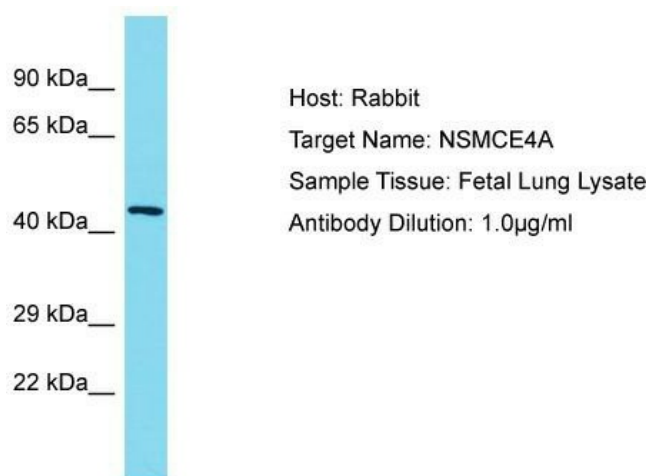
NSMCE4A is a component of the SMC5-SMC6 complex, a complex involved in DNA double-strand breaks by homologous recombination. The complex may promote sister chromatid homologous recombination by recruiting the SMC1-SMC3 cohesin complex to double-strand breaks. The complex is required for telomere maintenance via recombination in ALT (alternative lengthening of telomeres) cell lines and mediates sumoylation of shelterin complex (telosome) components which is proposed to lead to shelterin complex disassembly in ALT-associated PML bodies (APBs). It is involved in positive regulation of response to DNA damage stimulus.

**Synonyms:**

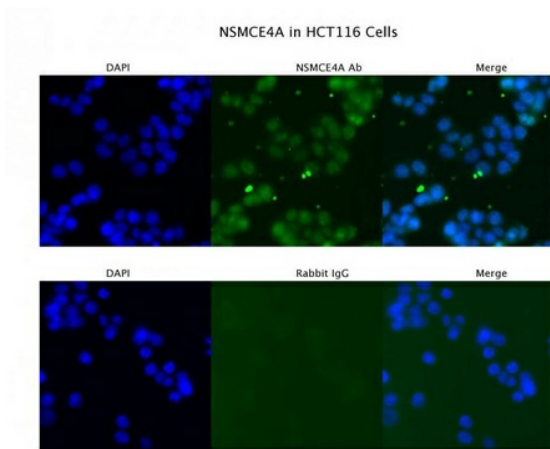
C10orf86; NS4EA; NSE4A

**Note:**

Immunogen Sequence Homology: Dog: 100%; Pig: 100%; Rat: 100%; Horse: 100%; Human: 100%; Mouse: 100%; Bovine: 100%; Rabbit: 100%; Zebrafish: 100%; Guinea pig: 100%

**Product images:**


Sample Type : HCT116; Primary Antibody Dilution: 4 ug/ml; Secondary Antibody : Anti-rabbit Alexa 546; Secondary Antibody Dilution: 2 ug/ml; Gene Name : NSMCE4A



Host: Rabbit; Target Name: NSMCE4A; Sample Tissue: Fetal Lung lysates; Antibody Dilution: 1.0 ug/ml