

Product datasheet for **TA337470**

NPEPL1 Rabbit Polyclonal Antibody

Product data:

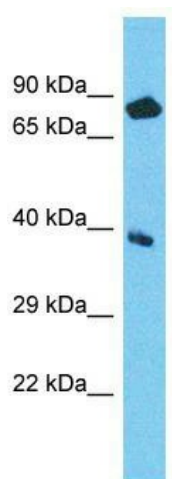
Product Type:	Primary Antibodies
Applications:	WB
Recommended Dilution:	WB
Reactivity:	Human
Host:	Rabbit
Isotype:	IgG
Clonality:	Polyclonal
Immunogen:	The immunogen for Anti-NPEPL1 antibody is: synthetic peptide directed towards the N-terminal region of Human NPEPL1. Synthetic peptide located within the following region: CIVMVCEQPEVFASACALARAFPLFTHRSGASRRLEKKTVTVEFFLVGQD
Formulation:	Liquid. Purified antibody supplied in 1x PBS buffer with 0.09% (w/v) sodium azide and 2% sucrose. <i>Note that this product is shipped as lyophilized powder to China customers.</i>
Purification:	Affinity Purified
Conjugation:	Unconjugated
Storage:	Store at -20°C as received.
Stability:	Stable for 12 months from date of receipt.
Predicted Protein Size:	43 kDa
Gene Name:	aminopeptidase-like 1
Database Link:	NP_078939 Entrez Gene 79716 Human Q8NDH3
Background:	NPEPL1 probably catalyzes the removal of unsubstituted N-terminal amino acids from various peptides.
Synonyms:	bA261P9.2
Note:	Immunogen Sequence Homology: Human: 100%; Dog: 93%; Horse: 93%; Bovine: 93%; Pig: 86%; Rat: 86%; Mouse: 86%; Rabbit: 86%; Guinea pig: 86%



[View online »](#)

Protein Families: Druggable Genome, Protease

Product images:



Host: Rabbit; Target Name: NPEPL1; Sample Tissue: ACHN Whole Cell lysates; Antibody Dilution: 1.0 ug/ml There is BioGPS gene expression data showing that NPEPL1 is expressed in ACHN