

Product datasheet for **TA337468**

NOL10 Rabbit Polyclonal Antibody

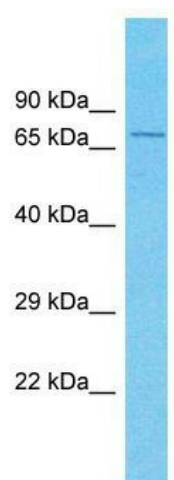
Product data:

Product Type:	Primary Antibodies
Applications:	WB
Recommended Dilution:	WB
Reactivity:	Human
Host:	Rabbit
Isotype:	IgG
Clonality:	Polyclonal
Immunogen:	The immunogen for Anti-NOL10 antibody is: synthetic peptide directed towards the C-terminal region of Human NOL10. Synthetic peptide located within the following region: LSVSDTTVGSKQLTFTLKRSEQKKQQAELHRQERKRLRRSAGHLKSR
Formulation:	Liquid. Purified antibody supplied in 1x PBS buffer with 0.09% (w/v) sodium azide and 2% sucrose.
Purification:	Affinity Purified
Conjugation:	Unconjugated
Storage:	Store at -20°C as received.
Stability:	Stable for 12 months from date of receipt.
Predicted Protein Size:	70 kDa
Gene Name:	nucleolar protein 10
Database Link:	NP_079170 Entrez Gene 79954 Human Q9BSC4
Background:	The function of this protein remains unknown.
Synonyms:	PQBP5
Note:	Immunogen Sequence Homology: Dog: 100%; Pig: 100%; Rat: 100%; Horse: 100%; Human: 100%; Mouse: 100%; Rabbit: 100%; Bovine: 93%; Yeast: 83%; Guinea pig: 83%



[View online »](#)

Product images:



Host: Rabbit; Target Name: NOL10; Sample
Tissue: 721_B Whole Cell lysates; Antibody
Dilution: 1.0 ug/ml