

## Product datasheet for **TA337467**

### NKPD1 Rabbit Polyclonal Antibody

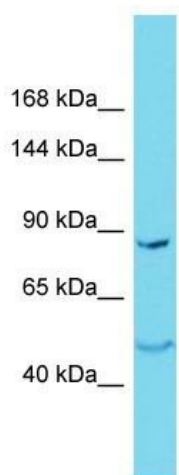
#### Product data:

Product Type:	Primary Antibodies
Applications:	WB
Recommended Dilution:	WB
Reactivity:	Human
Host:	Rabbit
Isotype:	IgG
Clonality:	Polyclonal
Immunogen:	The immunogen for Anti-NKPD1 antibody is: synthetic peptide directed towards the N-terminal region of Human NKPD1. Synthetic peptide located within the following region: AMARSGPALPSAAGVLLKPSEPTDARPLPAPAACGSFTAYSSDILTEDDV
Formulation:	Liquid. Purified antibody supplied in 1x PBS buffer with 0.09% (w/v) sodium azide and 2% sucrose.
Purification:	Affinity Purified
Conjugation:	Unconjugated
Storage:	Store at -20°C as received.
Stability:	Stable for 12 months from date of receipt.
Predicted Protein Size:	91 kDa
Gene Name:	NTPase, KAP family P-loop domain containing 1
Database Link:	<a href="#">NP_940880</a> <a href="#">Entrez Gene 284353 Human</a>
Background:	The function of this protein remains unknown.
Synonyms:	AC005757.7
Note:	Immunogen Sequence Homology: Human: 100%; Rat: 85%; Mouse: 85%; Bovine: 85%
Protein Families:	Transmembrane



[View online »](#)

## Product images:



Host: Rabbit  
 Target Name: NKPD1  
 Sample Tissue: Jurkat Cell Lysate  
 Antibody Dilution: 1.0 $\mu$ g/ml

Host: Rabbit; Target Name: NKPD1; Sample  
 Tissue: Jurkat Whole Cell lysates; Antibody  
 Dilution: 1.0 ug/ml