

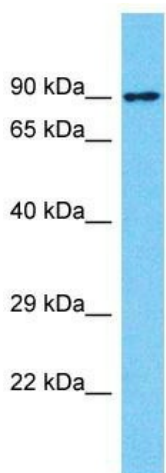
Product datasheet for **TA337463**

NBPF10 Rabbit Polyclonal Antibody

Product data:

Product Type:	Primary Antibodies
Applications:	WB
Recommended Dilution:	WB
Reactivity:	Human
Host:	Rabbit
Isotype:	IgG
Clonality:	Polyclonal
Immunogen:	The immunogen for Anti-NBPF10 antibody is: synthetic peptide directed towards the C-terminal region of Human NBPF10. Synthetic peptide located within the following region: YRSAFYVLEQQRVGLAVDMDEIEKYQEVEEDQDPSCPRLSRELLDEKEPE
Formulation:	Liquid. Purified antibody supplied in 1x PBS buffer with 0.09% (w/v) sodium azide and 2% sucrose.
Purification:	Affinity Purified
Conjugation:	Unconjugated
Storage:	Store at -20°C as received.
Stability:	Stable for 12 months from date of receipt.
Predicted Protein Size:	92 kDa
Gene Name:	neuroblastoma breakpoint family member 10
Database Link:	NP_001034792 Entrez Gene 100132406 Human
Background:	The function of this protein remains unknown.
Synonyms:	AB6; AG1; NBPF9
Note:	Immunogen Sequence Homology: Human: 100%


[View online »](#)

Product images:


Host: Rabbit
 Target Name: NBPF10
 Sample Tissue: HT1080 Cell Lysate
 Antibody Dilution: 1.0µg/ml

Host: Rabbit; Target Name: NBPF10; Sample
 Tissue: HT1080 Whole Cell lysates; Antibody
 Dilution: 1.0 ug/ml