

Product datasheet for **TA337460**

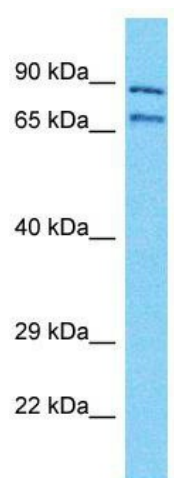
NBPF11 Rabbit Polyclonal Antibody

Product data:

Product Type:	Primary Antibodies
Applications:	WB
Recommended Dilution:	WB
Reactivity:	Human
Host:	Rabbit
Isotype:	IgG
Clonality:	Polyclonal
Immunogen:	The immunogen for Anti-NBPF11 antibody is: synthetic peptide directed towards the middle region of Human NBPF11. Synthetic peptide located within the following region: FLAKQQNKYKYEECKDLIKSMLRNERQFKEEKLAEQLKQAEELRQYKVLV
Formulation:	Liquid. Purified antibody supplied in 1x PBS buffer with 0.09% (w/v) sodium azide and 2% sucrose. <i>Note that this product is shipped as lyophilized powder to China customers.</i>
Purification:	Affinity Purified
Conjugation:	Unconjugated
Storage:	Store at -20°C as received.
Stability:	Stable for 12 months from date of receipt.
Predicted Protein Size:	65 kDa
Gene Name:	neuroblastoma breakpoint family member 11
Database Link:	NP_899228 Entrez Gene 200030 Human Q86T75
Background:	The function of this protein remains unknown.
Synonyms:	NBPF24
Note:	Immunogen Sequence Homology: Human: 100%



[View online »](#)

Product images:

Host: Rabbit; Target Name: NBPF11; Sample
Tissue: HepG2 Whole Cell lysates; Antibody
Dilution: 1.0 ug/ml