

Product datasheet for **TA337459**

NBPF6 Rabbit Polyclonal Antibody

Product data:

Product Type:	Primary Antibodies
Applications:	WB
Recommended Dilution:	WB
Reactivity:	Human
Host:	Rabbit
Isotype:	IgG
Clonality:	Polyclonal
Immunogen:	The immunogen for Anti-NBPF6 antibody is: synthetic peptide directed towards the N-terminal region of Human NBPF6. Synthetic peptide located within the following region: EKVQESPAPREVQKTEEKEVPQDSLEECVTCNSHNPSNSNQPHRSTKI
Formulation:	Liquid. Purified antibody supplied in 1x PBS buffer with 0.09% (w/v) sodium azide and 2% sucrose.
Purification:	Affinity Purified
Conjugation:	Unconjugated
Storage:	Store at -20°C as received.
Stability:	Stable for 12 months from date of receipt.
Predicted Protein Size:	70 kDa
Gene Name:	neuroblastoma breakpoint family member 6
Database Link:	NP_001137460 Entrez Gene 653149 Human Q5VWK0



[View online »](#)

Background:

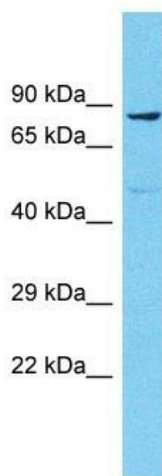
This gene is a member of the neuroblastoma breakpoint family (NBPF) which consists of dozens of recently duplicated genes primarily located in segmental duplications on human chromosome 1. This gene family has experienced its greatest expansion within the human lineage and has expanded, to a lesser extent, among primates in general. Members of this gene family are characterized by tandemly repeated copies of DUF1220 protein domains. Gene copy number variations in the human chromosomal region 1q21.1, where most DUF1220 domains are located, have been implicated in a number of developmental and neurogenetic diseases such as microcephaly, macrocephaly, autism, schizophrenia, mental retardation, congenital heart disease, neuroblastoma, and congenital kidney and urinary tract anomalies.

Synonyms:

NBPF6

Note:

Immunogen Sequence Homology: Human: 100%

Product images:


Host: Rabbit

Target Name: NBPF6

Sample Tissue: THP-1 Cell Lysate

Antibody Dilution: 1.0µg/ml

Host: Rabbit; Target Name: NBPF6; Sample Tissue: THP-1 Whole Cell lysates; Antibody Dilution: 1.0 ug/ml