

Product datasheet for **TA337454**

N42L1 (N4BP2L1) Rabbit Polyclonal Antibody

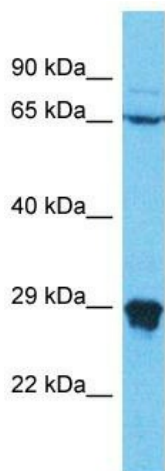
Product data:

Product Type:	Primary Antibodies
Applications:	WB
Recommended Dilution:	WB
Reactivity:	Human
Host:	Rabbit
Isotype:	IgG
Clonality:	Polyclonal
Immunogen:	The immunogen for Anti-N4BP2L1 antibody is: synthetic peptide directed towards the C-terminal region of Human N4BP2L1. Synthetic peptide located within the following region: GVSREKIHRMKERYEHDVTFHSVLHAEKPSRMNRNQDRNNALPSNNARYW
Formulation:	Liquid. Purified antibody supplied in 1x PBS buffer with 0.09% (w/v) sodium azide and 2% sucrose. <i>Note that this product is shipped as lyophilized powder to China customers.</i>
Purification:	Affinity Purified
Conjugation:	Unconjugated
Storage:	Store at -20°C as received.
Stability:	Stable for 12 months from date of receipt.
Predicted Protein Size:	28 kDa
Gene Name:	NEDD4 binding protein 2-like 1
Database Link:	NP_438169 Entrez Gene 90634 Human Q5TBK1
Background:	The function of this protein remains unknown.
Synonyms:	CG018
Note:	Immunogen Sequence Homology: Dog: 100%; Horse: 100%; Human: 100%; Rabbit: 93%; Yeast: 89%; Pig: 85%; Rat: 85%; Mouse: 85%; Guinea pig: 85%; Zebrafish: 82%



[View online »](#)

Product images:



Host: Rabbit

Target Name: N4BP2L1

Sample Tissue: RPMI-8226 Cell Lysate

Antibody Dilution: 1.0µg/ml

Host: Rabbit; Target Name: N4BP2L1; Sample Tissue: RPMI-8226 Whole Cell lysates; Antibody Dilution: 1.0 ug/ml; N4BP2L1 is strongly supported by BioGPS gene expression data to be expressed in RPMI-8226