

Product datasheet for **TA337453**

MZT1 Rabbit Polyclonal Antibody

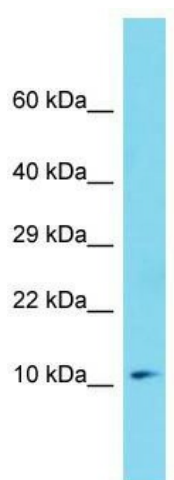
Product data:

Product Type:	Primary Antibodies
Applications:	WB
Recommended Dilution:	WB
Reactivity:	Human
Host:	Rabbit
Isotype:	IgG
Clonality:	Polyclonal
Immunogen:	The immunogen for Anti-MZT1 antibody is: synthetic peptide directed towards the middle region of Human MZT1. Synthetic peptide located within the following region: LLEISRILNTGLDMETLSICVRLCEQGINPEALSSVIKELRKATEALKAA
Formulation:	Liquid. Purified antibody supplied in 1x PBS buffer with 0.09% (w/v) sodium azide and 2% sucrose. <i>Note that this product is shipped as lyophilized powder to China customers.</i>
Purification:	Affinity Purified
Conjugation:	Unconjugated
Storage:	Store at -20°C as received.
Stability:	Stable for 12 months from date of receipt.
Predicted Protein Size:	9 kDa
Gene Name:	mitotic spindle organizing protein 1
Database Link:	NP_001065243 Entrez Gene 440145 Human Q08AG7
Background:	MZT1 is required for gamma-tubulin complex recruitment to the centrosome.
Synonyms:	C13orf37; MOZART1
Note:	Immunogen Sequence Homology: Dog: 100%; Pig: 100%; Horse: 100%; Human: 100%; Bovine: 100%; Rabbit: 100%; Guinea pig: 100%; Rat: 93%; Mouse: 93%; Zebrafish: 79%



[View online »](#)

Product images:



Host: Rabbit; Target Name: MZT1; Sample Tissue: 293T Whole Cell lysates; Antibody Dilution: 1.0 ug/ml