

Product datasheet for **TA337450**

MYLC2PL (MYL10) Rabbit Polyclonal Antibody

Product data:

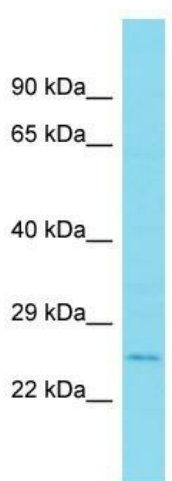
Product Type:	Primary Antibodies
Applications:	WB
Recommended Dilution:	WB
Reactivity:	Human
Host:	Rabbit
Isotype:	IgG
Clonality:	Polyclonal
Immunogen:	The immunogen for Anti-MYL10 antibody is: synthetic peptide directed towards the N-terminal region of Human MYL10. Synthetic peptide located within the following region: ARKRAEGTASSNVFSMFDQSQIQEFKESLALSPRLERNGMISAHCNLCLT
Formulation:	Liquid. Purified antibody supplied in 1x PBS buffer with 0.09% (w/v) sodium azide and 2% sucrose. <i>Note that this product is shipped as lyophilized powder to China customers.</i>
Purification:	Affinity Purified
Conjugation:	Unconjugated
Storage:	Store at -20°C as received.
Stability:	Stable for 12 months from date of receipt.
Predicted Protein Size:	25 kDa
Gene Name:	myosin light chain 10
Database Link:	NP_612412 Entrez Gene 93408 Human Q9BUA6
Background:	The function of this protein remains unknown.
Synonyms:	MYLC2PL; PLRLC
Note:	Immunogen Sequence Homology: Human: 100%; Dog: 93%; Pig: 93%; Rat: 93%; Mouse: 93%; Bovine: 86%; Guinea pig: 86%



[View online »](#)

Protein Pathways: Focal adhesion, Leukocyte transendothelial migration, Regulation of actin cytoskeleton, Tight junction

Product images:



Host: Rabbit

Target Name: MYL10

Sample Tissue: 721_B Cell Lysate

Antibody Dilution: 1.0 μ g/ml

Host: Rabbit; Target Name: MYL10; Sample Tissue: 721_B Whole Cell lysates; Antibody Dilution: 1.0 ug/ml; MYL10 is supported by BioGPS gene expression data to be expressed in 721_B