

Product datasheet for **TA337448**

MTSS1 Rabbit Polyclonal Antibody

Product data:

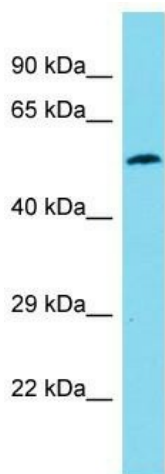
Product Type:	Primary Antibodies
Applications:	WB
Recommended Dilution:	WB
Reactivity:	Human
Host:	Rabbit
Isotype:	IgG
Clonality:	Polyclonal
Immunogen:	The immunogen for Anti-MTSS1 antibody is: synthetic peptide directed towards the middle region of Human MTSS1. Synthetic peptide located within the following region: PAMVTPGVATIR RTPSTKPSVRRGTIGAGPIPIKTPVIPVKTPPTVPDLP
Formulation:	Liquid. Purified antibody supplied in 1x PBS buffer with 0.09% (w/v) sodium azide and 2% sucrose. <i>Note that this product is shipped as lyophilized powder to China customers.</i>
Purification:	Affinity Purified
Conjugation:	Unconjugated
Storage:	Store at -20°C as received.
Stability:	Stable for 12 months from date of receipt.
Predicted Protein Size:	52 kDa
Gene Name:	metastasis suppressor 1
Database Link:	NP_055566 Entrez Gene 9788 Human O43312
Background:	MTSS1 may be related to cancer progression or tumor metastasis in a variety of organ sites, most likely through an interaction with the actin cytoskeleton.
Synonyms:	MIM; MIMA; MIMB
Note:	Immunogen Sequence Homology: Dog: 100%; Pig: 100%; Rat: 100%; Horse: 100%; Human: 100%; Mouse: 100%; Bovine: 100%; Rabbit: 100%; Guinea pig: 100%; Zebrafish: 83%



[View online »](#)

Protein Families: Druggable Genome

Product images:



Host: Rabbit
Target Name: MTSS1
Sample Tissue: 721_B Cell Lysate
Antibody Dilution: 1.0 μ g/ml

Host: Rabbit; Target Name: MTSS1; Sample Tissue: 721_B Whole Cell lysates; Antibody Dilution: 1.0 ug/ml; MTSS1 is strongly supported by BioGPS gene expression data to be expressed in Human 721_B cells