

## Product datasheet for **TA337447**

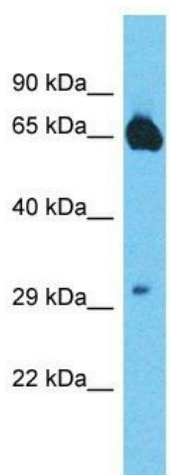
### MTSS2 Rabbit Polyclonal Antibody

#### Product data:

Product Type:	Primary Antibodies
Applications:	WB
Recommended Dilution:	WB
Reactivity:	Human
Host:	Rabbit
Isotype:	IgG
Clonality:	Polyclonal
Immunogen:	The immunogen for Anti-MTSS1L antibody is: synthetic peptide directed towards the middle region of Human MTSS1L. Synthetic peptide located within the following region: DWKKAANQLDKDHAKEYKRARHEIKKSSDTLKLQKKARKGKGDLPQLD
Formulation:	Liquid. Purified antibody supplied in 1x PBS buffer with 0.09% (w/v) sodium azide and 2% sucrose.
Purification:	Affinity Purified
Conjugation:	Unconjugated
Storage:	Store at -20°C as received.
Stability:	Stable for 12 months from date of receipt.
Predicted Protein Size:	32 kDa
Gene Name:	metastasis suppressor 1-like
Database Link:	<a href="#">NP_612392</a> <a href="#">Entrez Gene 92154 Human</a> <a href="#">Q765P7</a>
Background:	MTSS1L may function in actin bundling.
Synonyms:	ABBA; ABBA-1; ABBA1
Note:	Immunogen Sequence Homology: Dog: 100%; Pig: 100%; Rat: 100%; Horse: 100%; Human: 100%; Mouse: 100%; Bovine: 100%; Rabbit: 100%; Zebrafish: 100%; Guinea pig: 100%



[View online »](#)

**Product images:**

Host: Rabbit

Target Name: MTSS1L

Sample Tissue: OVCAR-3 Cell Lysate

Antibody Dilution: 1.0 $\mu$ g/ml

Host: Rabbit; Target Name: MTSS1L; Sample Tissue: OVCAR-3 Whole Cell lysates; Antibody Dilution: 1.0 ug/ml; MTSS1L is supported by BioGPS gene expression data to be expressed in OVCAR3