

## Product datasheet for **TA337445**

### MRPS36 Rabbit Polyclonal Antibody

#### Product data:

Product Type:	Primary Antibodies
Applications:	WB
Recommended Dilution:	WB
Reactivity:	Human
Host:	Rabbit
Isotype:	IgG
Clonality:	Polyclonal
Immunogen:	The immunogen for Anti-MRPS36 antibody is: synthetic peptide directed towards the middle region of Human MRPS36. Synthetic peptide located within the following region: SHSSVISQHSKSGKSPDLLMYQGPPDTAEIIKTLPQKYRRKLVSQEEMEF
Formulation:	Liquid. Purified antibody supplied in 1x PBS buffer with 0.09% (w/v) sodium azide and 2% sucrose. <i>Note that this product is shipped as lyophilized powder to China customers.</i>
Purification:	Affinity Purified
Conjugation:	Unconjugated
Storage:	Store at -20°C as received.
Stability:	Stable for 12 months from date of receipt.
Predicted Protein Size:	11 kDa
Gene Name:	mitochondrial ribosomal protein S36
Database Link:	<a href="#">NP_150597</a> <a href="#">Entrez Gene 92259 Human</a> <a href="#">P82909</a>



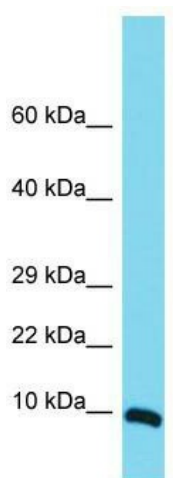
[View online »](#)

**Background:** Mammalian mitochondrial ribosomal proteins are encoded by nuclear genes and help in protein synthesis within the mitochondrion. The mitochondrial ribosome (mitoribosome) consists of a small 28S subunit and a large 39S subunit. They have an estimated 75% protein to rRNA composition compared to prokaryotic ribosomes, where this ratio is reversed. Another difference between mammalian mitoribosomes and prokaryotic ribosomes is that the latter contain a 5S rRNA. Among different species, the proteins comprising the mitoribosome differ greatly in sequence, and sometimes in biochemical properties, which prevents easy recognition by sequence homology. This gene encodes a 28S subunit protein. Pseudogenes corresponding to this gene are found on chromosomes 3p, 4q, 8p, 11q, 12q, and 20p.

**Synonyms:** DC47; MRP-S36

**Note:** Immunogen Sequence Homology: Pig: 100%; Human: 100%; Bovine: 100%; Rat: 93%; Horse: 93%; Mouse: 86%

**Product images:**



Host: Rabbit; Target Name: MRPS36; Sample Tissue: HeLa Whole Cell lysates; Antibody Dilution: 1.0 ug/ml