

Product datasheet for **TA337443**

MRPS25 Rabbit Polyclonal Antibody

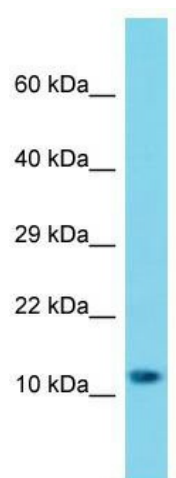
Product data:

Product Type:	Primary Antibodies
Applications:	WB
Recommended Dilution:	WB
Reactivity:	Human
Host:	Rabbit
Isotype:	IgG
Clonality:	Polyclonal
Immunogen:	The immunogen for Anti-MRPS25 antibody is: synthetic peptide directed towards the C-terminal region of Human MRPS25. Synthetic peptide located within the following region: YKNPWVQIMMFKNMTPSPFLRFYLDSEQLVDVETKSNKEIMEHIRKIL
Formulation:	Liquid. Purified antibody supplied in 1x PBS buffer with 0.09% (w/v) sodium azide and 2% sucrose. <i>Note that this product is shipped as lyophilized powder to China customers.</i>
Purification:	Affinity Purified
Conjugation:	Unconjugated
Storage:	Store at -20°C as received.
Stability:	Stable for 12 months from date of receipt.
Predicted Protein Size:	12 kDa
Gene Name:	mitochondrial ribosomal protein S25
Database Link:	NP_071942 Entrez Gene 64432 Human P82663
Background:	The function of this protein remains unknown.
Synonyms:	MRP-S25; RPMS25
Note:	Immunogen Sequence Homology: Horse: 100%; Human: 100%; Mouse: 100%; Bovine: 100%; Dog: 93%; Rabbit: 93%; Rat: 86%; Pig: 79%; Guinea pig: 79%



[View online »](#)

Product images:



Host: Rabbit; Target Name: MRPS25; Sample
Tissue: A549 Whole Cell lysates; Antibody
Dilution: 1.0 ug/ml