

Product datasheet for **TA337441**

MRPS18C Rabbit Polyclonal Antibody

Product data:

Product Type:	Primary Antibodies
Applications:	WB
Recommended Dilution:	WB
Reactivity:	Human
Host:	Rabbit
Isotype:	IgG
Clonality:	Polyclonal
Immunogen:	The immunogen for Anti-MRPS18C antibody is: synthetic peptide directed towards the C-terminal region of Human MRPS18C. Synthetic peptide located within the following region: FVSPFTGCIYGRHITGLCGKKQKEITKAIKRAQIMGFMPVTYKDPAYLKD
Formulation:	Liquid. Purified antibody supplied in 1x PBS buffer with 0.09% (w/v) sodium azide and 2% sucrose. <i>Note that this product is shipped as lyophilized powder to China customers.</i>
Purification:	Affinity Purified
Conjugation:	Unconjugated
Storage:	Store at -20°C as received.
Stability:	Stable for 12 months from date of receipt.
Predicted Protein Size:	15 kDa
Gene Name:	mitochondrial ribosomal protein S18C
Database Link:	NP_057151 Entrez Gene 51023 Human Q9Y3D5



[View online »](#)

Background:

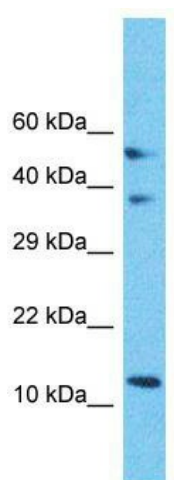
Mammalian mitochondrial ribosomal proteins are encoded by nuclear genes and help in protein synthesis within the mitochondrion. Mitochondrial ribosomes (mitoribosomes) consist of a small 28S subunit and a large 39S subunit. They have an estimated 75% protein to rRNA composition compared to prokaryotic ribosomes, where this ratio is reversed. Another difference between mammalian mitoribosomes and prokaryotic ribosomes is that the latter contain a 5S rRNA. Among different species, the proteins comprising the mitoribosome differ greatly in sequence, and sometimes in biochemical properties, which prevents easy recognition by sequence homology. This gene encodes a 28S subunit protein that belongs to the ribosomal protein S18P family. The encoded protein is one of three that has significant sequence similarity to bacterial S18 proteins.

Synonyms:

CGI-134; MRP-S18-1; MRP-S18-c; MRPS18-1; mrps18-c; S18mt-c

Note:

Immunogen Sequence Homology: Horse: 100%; Human: 100%; Pig: 93%; Rat: 93%; Mouse: 93%; Bovine: 93%; Guinea pig: 93%; Zebrafish: 83%

Product images:


Host: Rabbit; Target Name: MRPS18C; Sample
Tissue: MCF7 Whole Cell lysates; Antibody
Dilution: 1.0 ug/ml