

Product datasheet for **TA337440**

MRPS5 Rabbit Polyclonal Antibody

Product data:

Product Type:	Primary Antibodies
Applications:	WB
Recommended Dilution:	WB
Reactivity:	Human
Host:	Rabbit
Isotype:	IgG
Clonality:	Polyclonal
Immunogen:	The immunogen for Anti-MRPS5 antibody is: synthetic peptide directed towards the N-terminal region of Human MRPS5. Synthetic peptide located within the following region: KRKDLNRGQIIGEGRYGFLWPGLNVPLMKNGAVQTIAQRSKEEQEKVEAD
Formulation:	Liquid. Purified antibody supplied in 1x PBS buffer with 0.09% (w/v) sodium azide and 2% sucrose. <i>Note that this product is shipped as lyophilized powder to China customers.</i>
Purification:	Affinity Purified
Conjugation:	Unconjugated
Storage:	Store at -20°C as received.
Stability:	Stable for 12 months from date of receipt.
Predicted Protein Size:	27 kDa
Gene Name:	mitochondrial ribosomal protein S5
Database Link:	NP_114108 Entrez Gene 64969 Human P82675



[View online »](#)

Background:

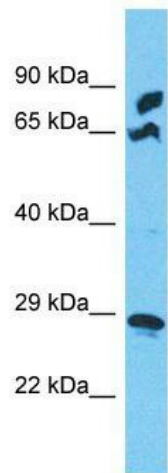
Mammalian mitochondrial ribosomal proteins are encoded by nuclear genes and help in protein synthesis within the mitochondrion. Mitochondrial ribosomes (mitoribosomes) consist of a small 28S subunit and a large 39S subunit. They have an estimated 75% protein to rRNA composition compared to prokaryotic ribosomes, where this ratio is reversed. Another difference between mammalian mitoribosomes and prokaryotic ribosomes is that the latter contain a 5S rRNA. Among different species, the proteins comprising the mitoribosome differ greatly in sequence, and sometimes in biochemical properties, which prevents easy recognition by sequence homology. This gene encodes a 28S subunit protein that belongs to the ribosomal protein S5P family. Pseudogenes corresponding to this gene are found on chromosomes 4q, 5q, and 18q.

Synonyms:

MRP-S5; S5mt

Note:

Immunogen Sequence Homology: Dog: 100%; Human: 100%; Bovine: 100%; Pig: 93%; Rat: 93%; Horse: 93%; Mouse: 92%; Rabbit: 92%; Guinea pig: 86%

Product images:

Host: Rabbit; Target Name: MRPS5; Sample Tissue: COLO205 Whole Cell lysates; Antibody Dilution: 1.0 ug/ml