

## Product datasheet for **TA337438**

### MRPL52 Rabbit Polyclonal Antibody

#### Product data:

Product Type:	Primary Antibodies
Applications:	WB
Recommended Dilution:	WB
Reactivity:	Human
Host:	Rabbit
Isotype:	IgG
Clonality:	Polyclonal
Immunogen:	The immunogen for Anti-MRPL52 antibody is: synthetic peptide directed towards the N-terminal region of Human MRPL52. Synthetic peptide located within the following region: MKGQLRRKAERETFARRVLLSQEMDAGLQAWQLRQQKLQEEQRKQENAL
Formulation:	Liquid. Purified antibody supplied in 1x PBS buffer with 0.09% (w/v) sodium azide and 2% sucrose. <i>Note that this product is shipped as lyophilized powder to China customers.</i>
Purification:	Affinity Purified
Conjugation:	Unconjugated
Storage:	Store at -20°C as received.
Stability:	Stable for 12 months from date of receipt.
Predicted Protein Size:	7 kDa
Gene Name:	mitochondrial ribosomal protein L52
Database Link:	<a href="#">NP_848026</a> <a href="#">Entrez Gene 122704 Human</a> <a href="#">Q86TS9</a>



[View online »](#)

**Background:**

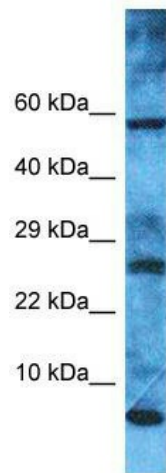
Mammalian mitochondrial ribosomal proteins are encoded by nuclear genes and help in protein synthesis within the mitochondrion. Mitochondrial ribosomes (mitoribosomes) consist of a small 28S subunit and a large 39S subunit. They have an estimated 75% protein to rRNA composition compared to prokaryotic ribosomes, where this ratio is reversed. Another difference between mammalian mitoribosomes and prokaryotic ribosomes is that the latter contain a 5S rRNA. Among different species, the proteins comprising the mitoribosome differ greatly in sequence, and sometimes in biochemical properties, which prevents easy recognition by sequence homology. This gene encodes a 39S subunit protein which has no bacterial homolog. Multiple transcript variants encoding different protein isoforms were identified through sequence analysis.

**Synonyms:**

mitochondrial ribosomal protein L52; OTTHUMP00000164489

**Note:**

Immunogen Sequence Homology: Human: 100%; Rat: 91%; Mouse: 91%; Dog: 86%; Pig: 86%; Bovine: 86%; Rabbit: 86%; Horse: 79%

**Product images:**

Host: Rabbit; Target Name: MRPL52; Sample Tissue: HeLa Whole Cell lysates; Antibody Dilution: 1.0 ug/ml