

Product datasheet for **TA337437**

MRPL30 Rabbit Polyclonal Antibody

Product data:

Product Type:	Primary Antibodies
Applications:	WB
Recommended Dilution:	WB
Reactivity:	Human
Host:	Rabbit
Isotype:	IgG
Clonality:	Polyclonal
Immunogen:	The immunogen for Anti-MRPL30 antibody is: synthetic peptide directed towards the C-terminal region of Human MRPL30. Synthetic peptide located within the following region: VVKHLIRIKPLKLPQGLPAEENMSNTCLKSTGELVVQWHLKPVEQKAHES
Formulation:	Liquid. Purified antibody supplied in 1x PBS buffer with 0.09% (w/v) sodium azide and 2% sucrose.
Purification:	Affinity Purified
Conjugation:	Unconjugated
Storage:	Store at -20°C as received.
Stability:	Stable for 12 months from date of receipt.
Predicted Protein Size:	14 kDa
Gene Name:	mitochondrial ribosomal protein L30
Database Link:	NP_660213 Entrez Gene 51263 Human Q8TCC3



[View online »](#)

Background:

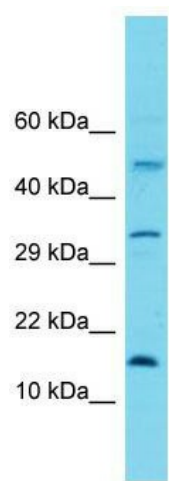
Mammalian mitochondrial ribosomal proteins are encoded by nuclear genes and help in protein synthesis within the mitochondrion. Mitochondrial ribosomes (mitoribosomes) consist of a small 28S subunit and a large 39S subunit. They have an estimated 75% protein to rRNA composition compared to prokaryotic ribosomes, where this ratio is reversed. Another difference between mammalian mitoribosomes and prokaryotic ribosomes is that the latter contain a 5S rRNA. Among different species, the proteins comprising the mitoribosome differ greatly in sequence, and sometimes in biochemical properties, which prevents easy recognition by sequence homology. This gene encodes a 39S subunit protein. Alternative splicing results in multiple transcript variants. Pseudogenes corresponding to this gene are found on chromosomes 6p and 12p. Read-through transcription also exists between this gene and the neighboring upstream lipoyltransferase 1 (LIPT1) gene.

Synonyms:

L28MT; L30MT; MRP-L28; MRP-L30; MRPL28; MRPL28M; RPML28

Note:

Immunogen Sequence Homology: Human: 100%; Rat: 91%; Mouse: 91%; Rabbit: 89%; Dog: 80%

Product images:

Host: Rabbit; Target Name: MRPL30; Sample Tissue: HeLa Whole Cell lysates; Antibody Dilution: 1.0 ug/ml