

## Product datasheet for **TA337435**

### MRPL2 Rabbit Polyclonal Antibody

#### Product data:

Product Type:	Primary Antibodies
Applications:	WB
Recommended Dilution:	WB
Reactivity:	Human
Host:	Rabbit
Isotype:	IgG
Clonality:	Polyclonal
Immunogen:	The immunogen for Anti-MRPL2 antibody is: synthetic peptide directed towards the N-terminal region of Human MRPL2. Synthetic peptide located within the following region: GGGHKQRYRMIDFLRFRPEETKSGPFEEKVIQVRYDPCRSADIALVAGGS
Formulation:	Liquid. Purified antibody supplied in 1x PBS buffer with 0.09% (w/v) sodium azide and 2% sucrose.
Purification:	Affinity Purified
Conjugation:	Unconjugated
Storage:	Store at -20°C as received.
Stability:	Stable for 12 months from date of receipt.
Predicted Protein Size:	33 kDa
Gene Name:	mitochondrial ribosomal protein L2
Database Link:	<a href="#">NP_057034</a> <a href="#">Entrez Gene 51069 Human</a> <a href="#">Q5T653</a>

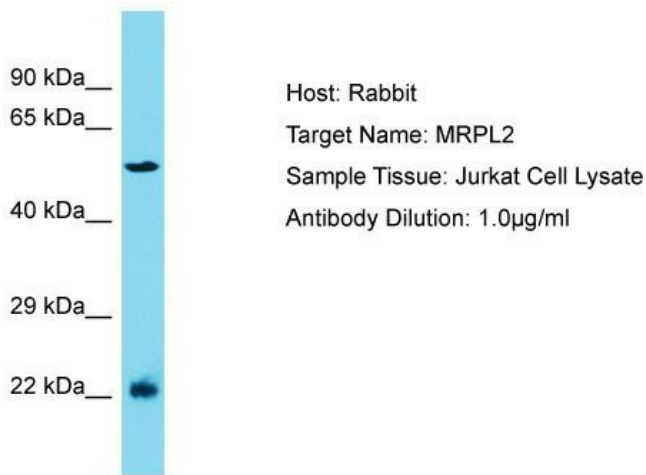
[View online »](#)

**Background:** Mammalian mitochondrial ribosomal proteins are encoded by nuclear genes and help in protein synthesis within the mitochondrion. Mitochondrial ribosomes (mitoribosomes) consist of a small 28S subunit and a large 39S subunit. They have an estimated 75% protein to rRNA composition compared to prokaryotic ribosomes, where this ratio is reversed. Another difference between mammalian mitoribosomes and prokaryotic ribosomes is that the latter contain a 5S rRNA. Among different species, the proteins comprising the mitoribosome differ greatly in sequence, and sometimes in biochemical properties, which prevents easy recognition by sequence homology. This gene encodes a 39S subunit protein that belongs to the EcoL2 ribosomal protein family. A pseudogene corresponding to this gene is found on chromosome 12q.

**Synonyms:** CGI-22; MRP-L14; RPML14

**Note:** Immunogen Sequence Homology: Human: 100%; Horse: 93%; Dog: 87%; Pig: 80%; Bovine: 80%; Rabbit: 80%

### Product images:



Host: Rabbit; Target Name: MRPL2; Sample Tissue: Jurkat Whole Cell lysates; Antibody Dilution: 1.0 ug/ml MRPL2 is supported by BioGPS gene expression data to be expressed in Jurkat