

Product datasheet for **TA337433**

MOBKL2C (MOB3C) Rabbit Polyclonal Antibody

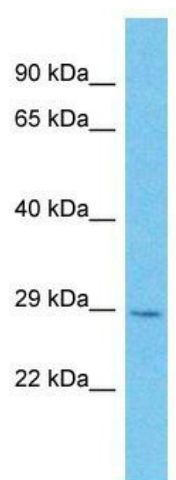
Product data:

Product Type:	Primary Antibodies
Applications:	WB
Recommended Dilution:	WB
Reactivity:	Human
Host:	Rabbit
Isotype:	IgG
Clonality:	Polyclonal
Immunogen:	The immunogen for Anti-MOB3C antibody is: synthetic peptide directed towards the middle region of Human MOB3C. Synthetic peptide located within the following region: MAGGPRYEYRWQDERQYRRPAKLSAPRYMALLMDWIEGLINDEEVFPTRV
Formulation:	Liquid. Purified antibody supplied in 1x PBS buffer with 0.09% (w/v) sodium azide and 2% sucrose.
Purification:	Affinity Purified
Conjugation:	Unconjugated
Storage:	Store at -20°C as received.
Stability:	Stable for 12 months from date of receipt.
Predicted Protein Size:	25 kDa
Gene Name:	MOB kinase activator 3C
Database Link:	NP_958805 Entrez Gene 148932 Human Q70IA8
Background:	The protein encoded by this gene is similar to the yeast Mob1 protein. Yeast Mob1 binds Mps1p, a protein kinase essential for spindle pole body duplication and mitotic checkpoint regulation. Alternatively spliced transcript variants encoding distinct isoforms have been observed.
Synonyms:	MOB1E; MOBKL2C
Note:	Immunogen Sequence Homology: Dog: 100%; Pig: 100%; Rat: 100%; Horse: 100%; Human: 100%; Mouse: 100%; Bovine: 100%; Rabbit: 100%; Guinea pig: 93%



[View online »](#)

Product images:



Host: Rabbit; Target Name: MOB3C; Sample
Tissue: RPMI-8226 Whole Cell lysates; Antibody
Dilution: 1.0 ug/ml