

## Product datasheet for **TA337430**

### **C10orf78 (SFR1) Rabbit Polyclonal Antibody**

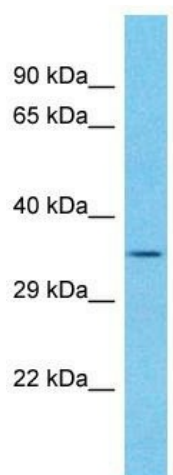
#### **Product data:**

<b>Product Type:</b>	Primary Antibodies
<b>Applications:</b>	WB
<b>Recommended Dilution:</b>	WB
<b>Reactivity:</b>	Human
<b>Host:</b>	Rabbit
<b>Isotype:</b>	IgG
<b>Clonality:</b>	Polyclonal
<b>Immunogen:</b>	The immunogen for Anti-SFR1 antibody is: synthetic peptide directed towards the N-terminal region of Human SFR1. Synthetic peptide located within the following region: NSSRKQPMSATLRERLRKTRFSFNSSYNVVKRLKVESEENDQTFSEKPAS
<b>Formulation:</b>	Liquid. Purified antibody supplied in 1x PBS buffer with 0.09% (w/v) sodium azide and 2% sucrose. <i>Note that this product is shipped as lyophilized powder to China customers.</i>
<b>Purification:</b>	Affinity Purified
<b>Conjugation:</b>	Unconjugated
<b>Storage:</b>	Store at -20°C as received.
<b>Stability:</b>	Stable for 12 months from date of receipt.
<b>Predicted Protein Size:</b>	33 kDa
<b>Gene Name:</b>	SWI5 dependent homologous recombination repair protein 1
<b>Database Link:</b>	<a href="#">NP_660290</a> <a href="#">Entrez Gene 119392 Human</a> <a href="#">Q86XK3</a>
<b>Background:</b>	SFR1 is a component of the SWI5-SFR1 complex, a complex required for double-strand break repair via homologous recombination.
<b>Synonyms:</b>	bA373N18.1; C10orf78; MEI5; MEIR5
<b>Note:</b>	Immunogen Sequence Homology: Pig: 100%; Human: 100%; Bovine: 100%; Dog: 85%; Rat: 85%



[View online »](#)

## Product images:



Host: Rabbit  
Target Name: SFR1  
Sample Tissue: Jurkat Cell Lysate  
Antibody Dilution: 1.0µg/ml

Host: Rabbit; Target Name: SFR1; Sample Tissue: Jurkat Whole Cell lysates; Antibody Dilution: 1.0 ug/ml