

Product datasheet for TA337429

C10orf78 (SFR1) Rabbit Polyclonal Antibody

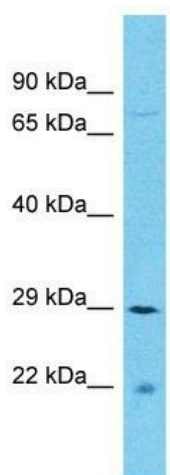
Product data:

Product Type:	Primary Antibodies
Applications:	WB
Recommended Dilution:	WB
Reactivity:	Human
Host:	Rabbit
Isotype:	IgG
Clonality:	Polyclonal
Immunogen:	The immunogen for Anti-SFR1 antibody is: synthetic peptide directed towards the C-terminal region of Human SFR1. Synthetic peptide located within the following region: LLIKKWRSCSQLLLYELQSAVSEENKKLSLTQLIDHYGLDDKLLHYNRSE
Formulation:	Liquid. Purified antibody supplied in 1x PBS buffer with 0.09% (w/v) sodium azide and 2% sucrose. <i>Note that this product is shipped as lyophilized powder to China customers.</i>
Purification:	Affinity Purified
Conjugation:	Unconjugated
Storage:	Store at -20°C as received.
Stability:	Stable for 12 months from date of receipt.
Predicted Protein Size:	26 kDa
Gene Name:	SWI5 dependent homologous recombination repair protein 1
Database Link:	NP_660290 Entrez Gene 119392 Human Q86XK3
Background:	SFR1 is a component of the SWI5-SFR1 complex, a complex required for double-strand break repair via homologous recombination.
Synonyms:	bA373N18.1; C10orf78; MEI5; MEIR5
Note:	Immunogen Sequence Homology: Human: 100%; Dog: 93%; Pig: 93%; Horse: 93%; Bovine: 93%; Rat: 92%; Rabbit: 86%; Guinea pig: 86%



[View online »](#)

Product images:



Host: Rabbit

Target Name: SFR1

Sample Tissue: COLO205 Cell Lysate

Antibody Dilution: 1.0 μ g/ml

Host: Rabbit; Target Name: SFR1; Sample Tissue: COLO205 Whole Cell lysates; Antibody Dilution: 1.0 ug/ml