

## Product datasheet for TA337428

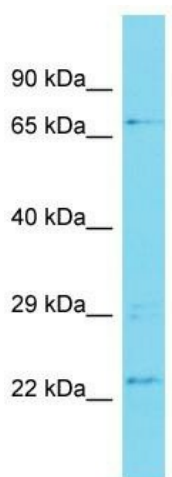
### MCM BP (MCMBP) Rabbit Polyclonal Antibody

#### Product data:

Product Type:	Primary Antibodies
Applications:	WB
Recommended Dilution:	WB
Reactivity:	Human
Host:	Rabbit
Isotype:	IgG
Clonality:	Polyclonal
Immunogen:	The immunogen for Anti-MCMBP antibody is: synthetic peptide directed towards the N-terminal region of Human MCMBP. Synthetic peptide located within the following region: SYTPSRHKRSYEDDDMDLQPNKQKQDHAGARQAGSVGGLQWCGEPKRLE
Formulation:	Liquid. Purified antibody supplied in 1x PBS buffer with 0.09% (w/v) sodium azide and 2% sucrose.
Purification:	Affinity Purified
Conjugation:	Unconjugated
Storage:	Store at -20°C as received.
Stability:	Stable for 12 months from date of receipt.
Predicted Protein Size:	72 kDa
Gene Name:	minichromosome maintenance complex binding protein
Database Link:	<a href="#">NP_079110</a> <a href="#">Entrez Gene 79892 Human</a> <a href="#">Q9BTE3</a>
Background:	This gene encodes a protein which is a component of the hexameric minichromosome maintenance (MCM) complex which regulates initiation and elongation of DNA. Multiple transcript variants encoding different isoforms have been found for this gene.
Synonyms:	C10orf119; MCM-BP
Note:	Immunogen Sequence Homology: Dog: 100%; Horse: 100%; Human: 100%; Pig: 93%; Rat: 93%; Bovine: 93%; Rabbit: 86%; Guinea pig: 79%


[View online »](#)

## Product images:



Host: Rabbit

Target Name: MCMBP

Sample Tissue: 721\_B Cell Lysate

Antibody Dilution: 1.0 µg/ml

Host: Rabbit; Target Name: MCMBP; Sample Tissue: 721\_B Whole Cell lysates; Antibody Dilution: 1.0 ug/ml MCMBP is supported by BioGPS gene expression data to be expressed in 721\_B