

Product datasheet for **TA337427**

MBLAC1 Rabbit Polyclonal Antibody

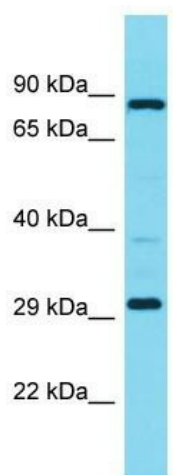
Product data:

Product Type:	Primary Antibodies
Applications:	WB
Recommended Dilution:	WB
Reactivity:	Human
Host:	Rabbit
Isotype:	IgG
Clonality:	Polyclonal
Immunogen:	The immunogen for Anti-MBLAC1 antibody is: synthetic peptide directed towards the C-terminal region of Human MBLAC1. Synthetic peptide located within the following region: GTVVVAGDVFERDGDDEDSWQALSEDPAAQERSRKRVLVADVWVPGHGPP
Formulation:	Liquid. Purified antibody supplied in 1x PBS buffer with 0.09% (w/v) sodium azide and 2% sucrose.
Purification:	Affinity Purified
Conjugation:	Unconjugated
Storage:	Store at -20°C as received.
Stability:	Stable for 12 months from date of receipt.
Predicted Protein Size:	27 kDa
Gene Name:	metallo-beta-lactamase domain containing 1
Database Link:	NP_981942 Entrez Gene 255374 Human A4D2B0
Background:	The function of this protein remains unknown.
Synonyms:	MGC39819
Note:	Immunogen Sequence Homology: Human: 100%; Horse: 93%; Rat: 86%; Pig: 79%; Bovine: 79%; Guinea pig: 79%



[View online »](#)

Product images:



Host: Rabbit
Target Name: MBLAC1
Sample Tissue: Fetal Liver Lysate
Antibody Dilution: 1.0 μ g/ml

Host: Rabbit; Target Name: MBLAC1; Sample
Tissue: Fetal Liver lysates; Antibody Dilution: 1.0
ug/ml