

Product datasheet for **TA337426**

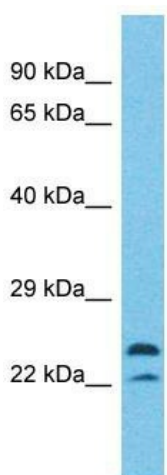
MAPK1IP1L Rabbit Polyclonal Antibody

Product data:

Product Type:	Primary Antibodies
Applications:	WB
Recommended Dilution:	WB
Reactivity:	Human
Host:	Rabbit
Isotype:	IgG
Clonality:	Polyclonal
Immunogen:	The immunogen for Anti-MAPK1IP1L antibody is: synthetic peptide directed towards the N-terminal region of Human MAPK1IP1L. Synthetic peptide located within the following region: SDEFSLADALPEHSPAKTSAVSNTKPGQPPQGWPGSNPWNNPSAPSSVPS
Formulation:	Liquid. Purified antibody supplied in 1x PBS buffer with 0.09% (w/v) sodium azide and 2% sucrose.
Purification:	Affinity Purified
Conjugation:	Unconjugated
Storage:	Store at -20°C as received.
Stability:	Stable for 12 months from date of receipt.
Predicted Protein Size:	24 kDa
Gene Name:	mitogen-activated protein kinase 1 interacting protein 1-like
Database Link:	NP_653179 Entrez Gene 93487 Human Q8NDC0
Background:	The function of this protein remains unknown.
Synonyms:	C14orf32; c14_5346; MISS
Note:	Immunogen Sequence Homology: Dog: 100%; Pig: 100%; Human: 100%; Bovine: 100%; Horse: 86%



[View online »](#)

Product images:


Host: Rabbit
 Target Name: MAPK1IP1L
 Sample Tissue: HT1080 Cell Lysate
 Antibody Dilution: 1.0µg/ml

Host: Rabbit; Target Name: MAPK1IP1L; Sample Tissue: HT1080 Whole Cell lysates; Antibody Dilution: 1.0 ug/ml MAPK1IP1L is strongly supported by BioGPS gene expression data to be expressed in Human HT1080 cells