

Product datasheet for **TA337425**

MAGEC3 Rabbit Polyclonal Antibody

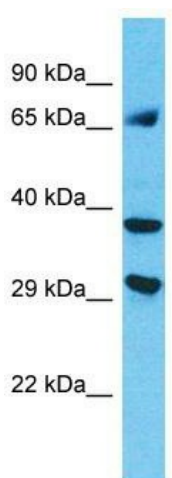
Product data:

Product Type:	Primary Antibodies
Applications:	WB
Recommended Dilution:	WB
Reactivity:	Human
Host:	Rabbit
Isotype:	IgG
Clonality:	Polyclonal
Immunogen:	The immunogen for Anti-MAGEC3 antibody is: synthetic peptide directed towards the C-terminal region of Human MAGEC3. Synthetic peptide located within the following region: RGLTEASPQQKKGGEDEDMPAAGMPPLPQSPPEIPPQGPPKISPQGGPPQS
Formulation:	Liquid. Purified antibody supplied in 1x PBS buffer with 0.09% (w/v) sodium azide and 2% sucrose. <i>Note that this product is shipped as lyophilized powder to China customers.</i>
Purification:	Affinity Purified
Conjugation:	Unconjugated
Storage:	Store at -20°C as received.
Stability:	Stable for 12 months from date of receipt.
Predicted Protein Size:	72 kDa
Gene Name:	MAGE family member C3
Database Link:	NP_803251 Entrez Gene 139081 Human Q8TD91
Background:	This gene is a member of the MAGEC gene family. The members of this family are not expressed in normal tissues, except for testis, and are expressed in tumors of various histological types. The MAGEC genes are clustered on chromosome Xq26-q27. Two transcript variants encoding distinct isoforms have been found for this gene.
Synonyms:	CT7.2; HCA2; MAGE-C3; MAGEC4
Note:	Immunogen Sequence Homology: Human: 100%



[View online »](#)

Product images:



Host: Rabbit

Target Name: MAGEC3

Sample Tissue: HepG2 Cell Lysate

Antibody Dilution: 1.0 μ g/ml

Host: Rabbit; Target Name: MAGEC3; Sample Tissue: HepG2 Whole Cell lysates; Antibody Dilution: 1.0 ug/ml MAGEC3 is supported by BioGPS gene expression data to be expressed in HepG2