

Product datasheet for **TA337424**

MAGEB10 Rabbit Polyclonal Antibody

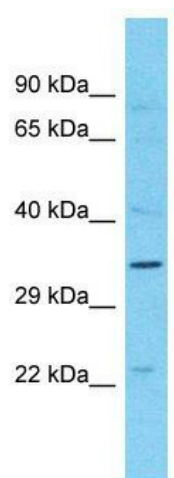
Product data:

Product Type:	Primary Antibodies
Applications:	WB
Recommended Dilution:	WB
Reactivity:	Human
Host:	Rabbit
Isotype:	IgG
Clonality:	Polyclonal
Immunogen:	The immunogen for Anti-MAGEB10 antibody is: synthetic peptide directed towards the N-terminal region of Human MAGEB10. Synthetic peptide located within the following region: MPRGQKSKLRAREKRRQARGGLEDLIDALDILEEEEESSPPSASACKDVF
Formulation:	Liquid. Purified antibody supplied in 1x PBS buffer with 0.09% (w/v) sodium azide and 2% sucrose. <i>Note that this product is shipped as lyophilized powder to China customers.</i>
Purification:	Affinity Purified
Conjugation:	Unconjugated
Storage:	Store at -20°C as received.
Stability:	Stable for 12 months from date of receipt.
Predicted Protein Size:	38 kDa
Gene Name:	MAGE family member B10
Database Link:	NP_872312 Entrez Gene 139422 Human Q96LZ2
Background:	This gene encodes a member of the B subfamily of the melanoma associated antigen protein family. The encoded protein is specifically expressed in testis and tumor cells.
Synonyms:	FLJ32965; MGC120394
Note:	Immunogen Sequence Homology: Human: 100%; Horse: 93%; Bovine: 93%; Dog: 86%; Pig: 86%; Rat: 86%; Mouse: 86%; Rabbit: 86%; Guinea pig: 86%



[View online »](#)

Product images:



Host: Rabbit; Target Name: MAGEB10; Sample
Tissue: PANC1 Whole Cell lysates; Antibody
Dilution: 1.0 ug/ml