

## Product datasheet for **TA337423**

### **MAGEB5 Rabbit Polyclonal Antibody**

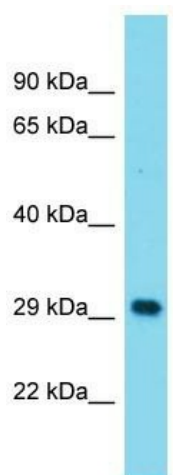
#### **Product data:**

Product Type:	Primary Antibodies
Applications:	WB
Recommended Dilution:	WB
Reactivity:	Human
Host:	Rabbit
Isotype:	IgG
Clonality:	Polyclonal
Immunogen:	The immunogen for Anti-MAGEB5 antibody is: synthetic peptide directed towards the N-terminal region of Human MAGEB5. Synthetic peptide located within the following region: DERANSRDEEYPCSSSEVSPSTESSCSNFINIKVGLLEQFLLYKFKMKQRI
Formulation:	Liquid. Purified antibody supplied in 1x PBS buffer with 0.09% (w/v) sodium azide and 2% sucrose.
Purification:	Affinity Purified
Conjugation:	Unconjugated
Storage:	Store at -20°C as received.
Stability:	Stable for 12 months from date of receipt.
Predicted Protein Size:	31 kDa
Gene Name:	MAGE family member B5
Database Link:	<a href="#">NP_001258681</a> <a href="#">Entrez Gene 347541 Human</a> <a href="#">Q9BZ81</a>
Background:	The function of this protein remains unknown.
Synonyms:	CT3.3; MAGE-B5
Note:	Immunogen Sequence Homology: Human: 100%



[View online »](#)

## Product images:



Host: Rabbit  
Target Name: MAGEB5  
Sample Tissue: Fetal Liver Lysate  
Antibody Dilution: 1.0 µg/ml

Host: Rabbit; Target Name: MAGEB5; Sample Tissue: Fetal Liver lysates; Antibody Dilution: 1.0 ug/ml