

Product datasheet for TA337422

LRRC48 (DRC3) Rabbit Polyclonal Antibody

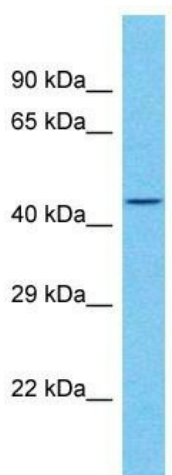
Product data:

Product Type:	Primary Antibodies
Applications:	WB
Recommended Dilution:	WB
Reactivity:	Human
Host:	Rabbit
Isotype:	IgG
Clonality:	Polyclonal
Immunogen:	The immunogen for Anti-LRRC48 antibody is: synthetic peptide directed towards the C-terminal region of Human LRRC48. Synthetic peptide located within the following region: NIFEYGLKQQEKRKTELDTFSECVREAIQENQEQGKRKIAKFEEKHLSLF
Formulation:	Liquid. Purified antibody supplied in 1x PBS buffer with 0.09% (w/v) sodium azide and 2% sucrose. <i>Note that this product is shipped as lyophilized powder to China customers.</i>
Purification:	Affinity Purified
Conjugation:	Unconjugated
Storage:	Store at -20°C as received.
Stability:	Stable for 12 months from date of receipt.
Predicted Protein Size:	45 kDa
Gene Name:	dynein regulatory complex subunit 3
Database Link:	NP_112584 Entrez Gene 83450 Human Q9H069
Background:	The function of this protein remains unknown.
Synonyms:	CFAP134; LRRC48
Note:	Immunogen Sequence Homology: Human: 100%; Horse: 93%; Bovine: 93%; Rabbit: 92%; Dog: 86%; Rat: 86%; Pig: 85%; Guinea pig: 85%



[View online »](#)

Product images:



Host: Rabbit
Target Name: LRRC48
Sample Tissue: ACHN Cell Lysate
Antibody Dilution: 1.0 μ g/ml

Host: Rabbit; Target Name: LRRC48; Sample
Tissue: ACHN Whole Cell lysates; Antibody
Dilution: 1.0 ug/ml