

Product datasheet for TA337421

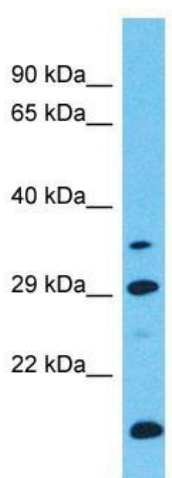
LRRC46 Rabbit Polyclonal Antibody

Product data:

Product Type:	Primary Antibodies
Applications:	WB
Recommended Dilution:	WB
Reactivity:	Human
Host:	Rabbit
Isotype:	IgG
Clonality:	Polyclonal
Immunogen:	The immunogen for Anti-LRRC46 antibody is: synthetic peptide directed towards the C-terminal region of Human LRRC46. Synthetic peptide located within the following region: SPTKKPCSLIPRGHQSSFWGRKGGARAATAPKASVAEAPSTTKTTAKRSKK
Formulation:	Liquid. Purified antibody supplied in 1x PBS buffer with 0.09% (w/v) sodium azide and 2% sucrose.
Purification:	Affinity Purified
Conjugation:	Unconjugated
Storage:	Store at -20°C as received.
Stability:	Stable for 12 months from date of receipt.
Predicted Protein Size:	35 kDa
Gene Name:	leucine rich repeat containing 46
Database Link:	NP_219481 Entrez Gene 90506 Human Q96FV0
Background:	The function of this protein remains unknown.
Synonyms:	FLJ23553; MGC16309
Note:	Immunogen Sequence Homology: Human: 100%; Rat: 77%



[View online »](#)

Product images:

Host: Rabbit
Target Name: LRRC46
Sample Tissue: ACHN Cell Lysate
Antibody Dilution: 1.0 μ g/ml

Host: Rabbit; Target Name: LRRC46; Sample
Tissue: ACHN Whole Cell lysates; Antibody
Dilution: 1.0 ug/ml