

Product datasheet for **TA337419**

LRR37A Rabbit Polyclonal Antibody

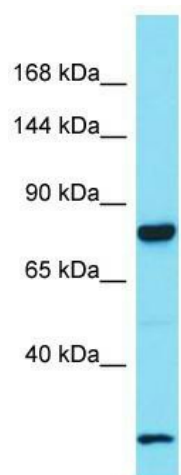
Product data:

Product Type:	Primary Antibodies
Applications:	WB
Recommended Dilution:	WB
Reactivity:	Human
Host:	Rabbit
Isotype:	IgG
Clonality:	Polyclonal
Immunogen:	The immunogen for Anti-LRR37A antibody is: synthetic peptide directed towards the C-terminal region of Human LRR37A. Synthetic peptide located within the following region: RESQDGLSSFGQPLWFKDLYKPLSATRINNHAWKLHKKSSNEDKILNRDP
Formulation:	Liquid. Purified antibody supplied in 1x PBS buffer with 0.09% (w/v) sodium azide and 2% sucrose.
Purification:	Affinity Purified
Conjugation:	Unconjugated
Storage:	Store at -20°C as received.
Stability:	Stable for 12 months from date of receipt.
Predicted Protein Size:	81 kDa
Gene Name:	leucine rich repeat containing 37A
Database Link:	NP_055649 Entrez Gene 9884 Human A6NMS7
Background:	The function of this protein remains unknown.
Synonyms:	LRR37
Note:	Immunogen Sequence Homology: Human: 100%
Protein Families:	Transmembrane



[View online »](#)

Product images:



Host: Rabbit; Target Name: LRRC37A; Sample
Tissue: Fetal Lung lysates; Antibody Dilution: 1.0
ug/ml