

Product datasheet for **TA337418**

LRRC36 Rabbit Polyclonal Antibody

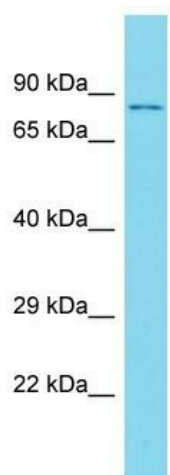
Product data:

Product Type:	Primary Antibodies
Applications:	WB
Recommended Dilution:	WB
Reactivity:	Human
Host:	Rabbit
Isotype:	IgG
Clonality:	Polyclonal
Immunogen:	The immunogen for Anti-LRRC36 antibody is: synthetic peptide directed towards the N-terminal region of Human LRRC36. Synthetic peptide located within the following region: LDDRTVREGERKAAKLHFSQLGENSENFLLEVEKSSREKTMKNCVTGESSA
Formulation:	Liquid. Purified antibody supplied in 1x PBS buffer with 0.09% (w/v) sodium azide and 2% sucrose.
Purification:	Affinity Purified
Conjugation:	Unconjugated
Storage:	Store at -20°C as received.
Stability:	Stable for 12 months from date of receipt.
Predicted Protein Size:	69 kDa
Gene Name:	leucine rich repeat containing 36
Database Link:	NP_060766 Entrez Gene 55282 Human Q1X8D7
Background:	The function of this protein remains unknown.
Synonyms:	RORBP70; XLHSRF2
Note:	Immunogen Sequence Homology: Human: 100%; Horse: 93%; Rabbit: 93%; Dog: 86%; Pig: 86%; Rat: 86%; Bovine: 86%; Guinea pig: 86%; Mouse: 83%



[View online »](#)

Product images:



Host: Rabbit

Target Name: LRRC36

Sample Tissue: Placenta Lysate

Antibody Dilution: 1.0 μ g/ml

Host: Rabbit; Target Name: LRRC36; Sample Tissue: Placenta lysates; Antibody Dilution: 1.0 ug/ml