

Product datasheet for **TA337417**

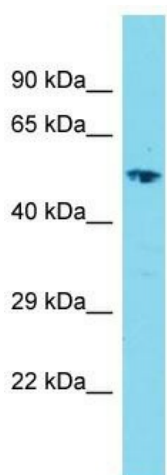
LRRC14B Rabbit Polyclonal Antibody

Product data:

Product Type:	Primary Antibodies
Applications:	WB
Recommended Dilution:	WB
Reactivity:	Human
Host:	Rabbit
Isotype:	IgG
Clonality:	Polyclonal
Immunogen:	The immunogen for Anti-LRRC14B antibody is: synthetic peptide directed towards the C-terminal region of Human LRRC14B. Synthetic peptide located within the following region: DELAMSKFNQKYDEIAEELRAVLLRADREDIQVSTPLFGSFDPIQETS
Formulation:	Liquid. Purified antibody supplied in 1x PBS buffer with 0.09% (w/v) sodium azide and 2% sucrose.
Purification:	Affinity Purified
Conjugation:	Unconjugated
Storage:	Store at -20°C as received.
Stability:	Stable for 12 months from date of receipt.
Predicted Protein Size:	56 kDa
Gene Name:	leucine rich repeat containing 14B
Database Link:	NP_001073947 Entrez Gene 389257 Human A6NHZ5
Background:	The function of this protein remains unknown.
Synonyms:	LRRC14B
Note:	Immunogen Sequence Homology: Human: 100%; Bovine: 83%; Rabbit: 83%; Dog: 79%; Pig: 79%; Rat: 79%; Mouse: 79%; Guinea pig: 79%



[View online »](#)

Product images:

Host: Rabbit
Target Name: LRRC14B
Sample Tissue: Fetal Kidney Lysate
Antibody Dilution: 1.0 μ g/ml

Host: Rabbit; Target Name: LRRC14B; Sample
Tissue: Fetal Kidney lysates; Antibody Dilution: 1.0
ug/ml