

## Product datasheet for **TA337416**

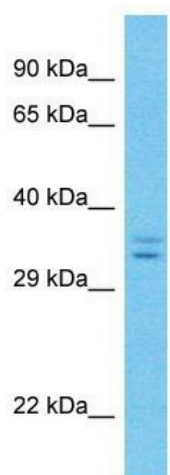
### LRRC10B Rabbit Polyclonal Antibody

#### Product data:

Product Type:	Primary Antibodies
Applications:	WB
Recommended Dilution:	WB
Reactivity:	Human
Host:	Rabbit
Isotype:	IgG
Clonality:	Polyclonal
Immunogen:	The immunogen for Anti-LRRC10B antibody is: synthetic peptide directed towards the C-terminal region of Human LRRC10B. Synthetic peptide located within the following region: VTGPPRVADTVFLVGEGAVERMAERDEPTPRPPRRPARAFEDEEEEDLL
Formulation:	Liquid. Purified antibody supplied in 1x PBS buffer with 0.09% (w/v) sodium azide and 2% sucrose.
Purification:	Affinity Purified
Conjugation:	Unconjugated
Storage:	Store at -20°C as received.
Stability:	Stable for 12 months from date of receipt.
Predicted Protein Size:	32 kDa
Gene Name:	leucine rich repeat containing 10B
Database Link:	<a href="#">NP_001138549</a> <a href="#">Entrez Gene 390205 Human</a> <a href="#">A6NIK2</a>
Background:	The function of this protein remains unknown.
Synonyms:	LRRC10B
Note:	Immunogen Sequence Homology: Dog: 100%; Pig: 100%; Horse: 100%; Human: 100%; Bovine: 100%; Rabbit: 100%; Guinea pig: 100%; Rat: 93%; Mouse: 93%



[View online »](#)

**Product images:**


Host: Rabbit  
 Target Name: LRRC10B  
 Sample Tissue: Hela Cell Lysate  
 Antibody Dilution: 1.0µg/ml

Host: Rabbit; Target Name: LRRC10B; Sample  
 Tissue: Hela Whole Cell lysates; Antibody Dilution:  
 1.0 ug/ml