

## Product datasheet for **TA337415**

### LRP5L Rabbit Polyclonal Antibody

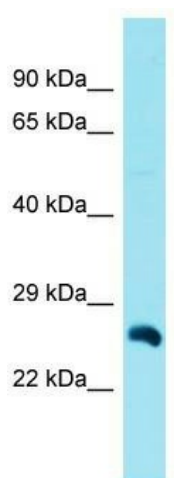
#### Product data:

Product Type:	Primary Antibodies
Applications:	WB
Recommended Dilution:	WB
Reactivity:	Human
Host:	Rabbit
Isotype:	IgG
Clonality:	Polyclonal
Immunogen:	The immunogen for Anti-LRP5L antibody is: synthetic peptide directed towards the C-terminal region of Human LRP5L. Synthetic peptide located within the following region: AKTDKIEAISVDETKRQTLLKDKLPHIFRFTLLGDFIYWTAWQHHSIKRV
Formulation:	Liquid. Purified antibody supplied in 1x PBS buffer with 0.09% (w/v) sodium azide and 2% sucrose.
Purification:	Affinity Purified
Conjugation:	Unconjugated
Storage:	Store at -20°C as received.
Stability:	Stable for 12 months from date of receipt.
Predicted Protein Size:	24 kDa
Gene Name:	LDL receptor related protein 5 like
Database Link:	<a href="#">NP_872298</a> <a href="#">Entrez Gene 91355 Human</a> <a href="#">A4QPB2</a>
Background:	The function of this protein remains unknown.
Synonyms:	DKFZp434O0213
Note:	Immunogen Sequence Homology: Human: 100%; Rat: 77%
Protein Families:	Druggable Genome



[View online »](#)

Product images:



Host: Rabbit; Target Name: LRP5L; Sample  
Tissue: Fetal Heart lysates; Antibody Dilution: 1.0  
ug/ml