

Product datasheet for **TA337414**

LRIT3 Rabbit Polyclonal Antibody

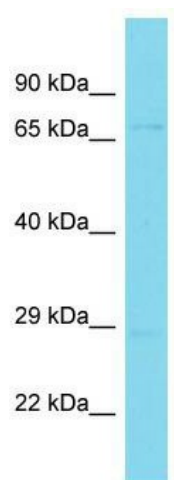
Product data:

Product Type:	Primary Antibodies
Applications:	WB
Recommended Dilution:	WB
Reactivity:	Human
Host:	Rabbit
Isotype:	IgG
Clonality:	Polyclonal
Immunogen:	The immunogen for Anti-LRIT3 antibody is: synthetic peptide directed towards the middle region of Human LRIT3. Synthetic peptide located within the following region: TVIQESPEEGVRWSIMSLTGISSKDAGDYKCKAKNLAGMSEAVVTVTVLG
Formulation:	Liquid. Purified antibody supplied in 1x PBS buffer with 0.09% (w/v) sodium azide and 2% sucrose. <i>Note that this product is shipped as lyophilized powder to China customers.</i>
Purification:	Affinity Purified
Conjugation:	Unconjugated
Storage:	Store at -20°C as received.
Stability:	Stable for 12 months from date of receipt.
Predicted Protein Size:	69 kDa
Gene Name:	leucine-rich repeat, Ig-like and transmembrane domains 3
Database Link:	NP_940908 Entrez Gene 345193 Human Q3SXY7
Background:	The function of this protein remains unknown.
Synonyms:	CSNB1F; FIGLER4
Note:	Immunogen Sequence Homology: Human: 100%; Dog: 93%; Pig: 93%; Horse: 93%; Guinea pig: 93%; Rabbit: 92%; Bovine: 86%
Protein Families:	Transmembrane



[View online »](#)

Product images:



Host: Rabbit; Target Name: LRIT3; Sample Tissue: MCF7 Whole Cell lysates; Antibody Dilution: 1.0 ug/ml