

Product datasheet for **TA337413**

Leiomodlin 3 (LMOD3) Rabbit Polyclonal Antibody

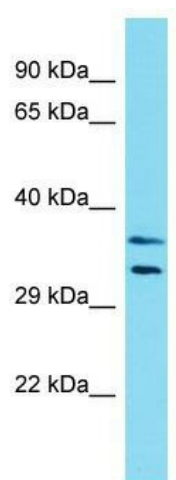
Product data:

Product Type:	Primary Antibodies
Applications:	WB
Recommended Dilution:	WB
Reactivity:	Human
Host:	Rabbit
Isotype:	IgG
Clonality:	Polyclonal
Immunogen:	The immunogen for Anti-LMOD3 antibody is: synthetic peptide directed towards the N-terminal region of Human LMOD3. Synthetic peptide located within the following region: VKSEETQEEHEEIEKRKNMAQYLKEKLNNEIVANKRESKGSSNIQETD
Formulation:	Liquid. Purified antibody supplied in 1x PBS buffer with 0.09% (w/v) sodium azide and 2% sucrose.
Purification:	Affinity Purified
Conjugation:	Unconjugated
Storage:	Store at -20°C as received.
Stability:	Stable for 12 months from date of receipt.
Predicted Protein Size:	38 kDa
Gene Name:	leiomodlin 3
Database Link:	NP_938012 Entrez Gene 56203 Human Q0VAK6
Background:	The function of this protein remains unknown.
Synonyms:	NEM10
Note:	Immunogen Sequence Homology: Human: 100%; Horse: 79%; Dog: 77%; Bovine: 77%



[View online »](#)

Product images:



Host: Rabbit; Target Name: LMOD3; Sample
Tissue: HCT15 Whole Cell lysates; Antibody
Dilution: 1.0 ug/ml